



PILOT OPERATED DIRECTIONAL CONTROL VALVE DP10

ENGINEERING

1

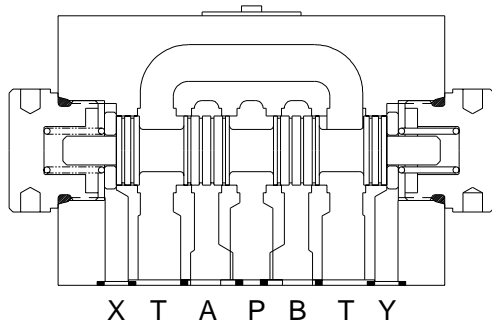
Ref. No. D32200
Release 17/04/2002

Description

Available as spring centered, spring offset. Valve mounting interface conforms to International and National standards.

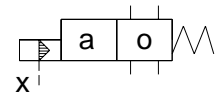


Section

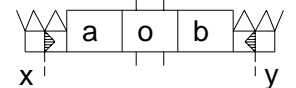


Hydraulic Symbol

2 position spring offset

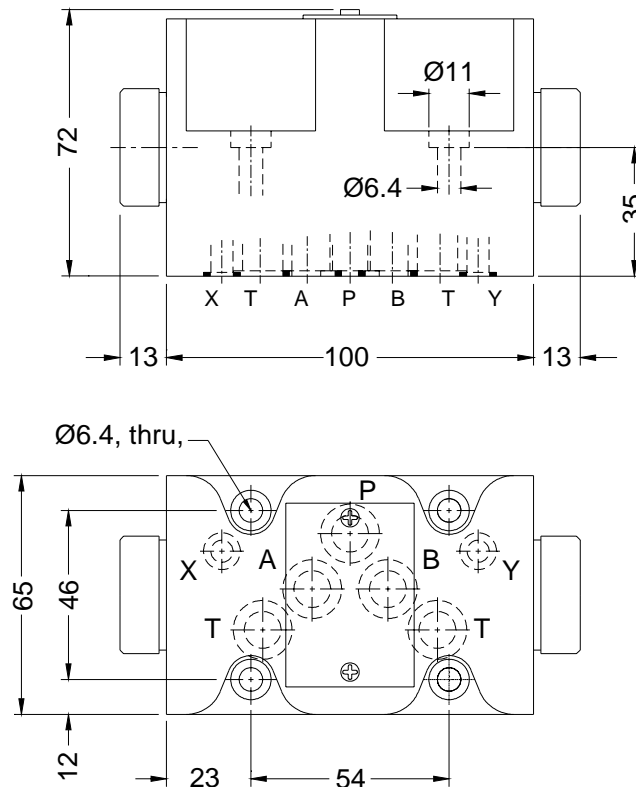


3 position spring centred

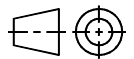


Unit Dimensions

Valve



Dimensions in mm.



Polyhydron Pvt. Ltd.

78-80, Machhe Industrial Estate, Machhe,
Belgaum - 590 014, INDIA.

Phone : +91-(0)831-411001

Fax : +91-(0)831-411002

E-mail : polyhydron@vsnl.com

Website : www.polyhydron.com



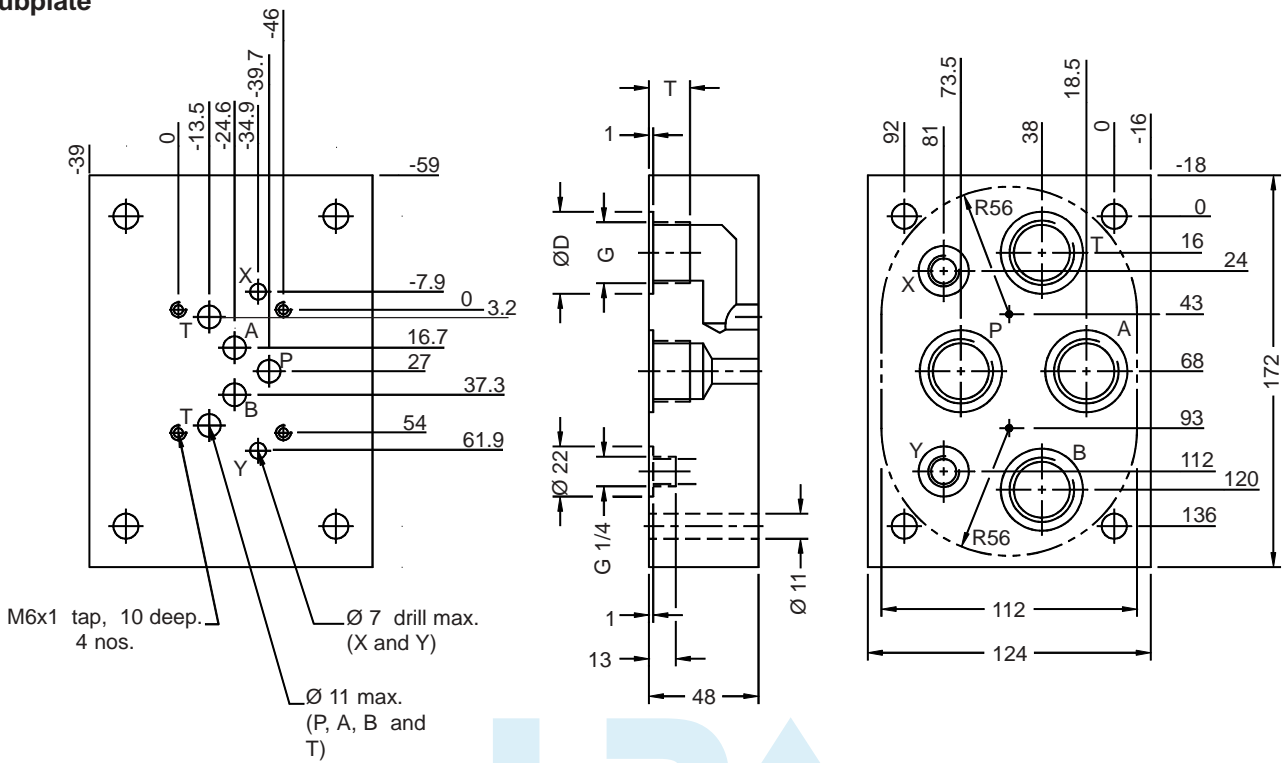
PILOT OPERATED DIRECTIONAL CONTROL VALVE DP10

ENGINEERING

2

Ref. No. D32200

Subplate



Subplate	G	ØD	T
1NSD05G06	G 3/4	36	17
1NSD05G08	G 1	44	19

HPA
 Note :- Valve fixing screws M6x50L, 4 nos.
 Property class 10.9, Tightening torque 16 Nm.
HYDRO PNEUMATIC ACCESSORIES
 W: <http://hpa.net.in> E: inq@hpa.net.in

Unit Dimensions

Construction	Spool type.
Mounting	Subplate mounting as per ISO 4401 - AC - 05 - 4 - A and IS 10187 - 10 mm diameter nominal port.
Mounting position	Optional.
Flow direction	As per spool type.
Operating pressure	For port P, A and B 350 bar. For port T 250 bar. For port X and Y 150 bar.
Minimum pilot pressure	5 bar.
Hydraulic medium	Mineral oil.
Viscosity range	10 cSt to 380 cSt.
Fluid temperature range	-20 °C to +70 °C.
Fluid cleanliness requirement	As per ISO 16/13 or better.
Maximum flow handling capacity	Refer performance curves.
Mass	3.5 kg APPROX



PILOT OPERATED DIRECTIONAL CONTROL VALVE DP10

ENGINEERING

3

Ref. No. D32200

Performance Curve

Oil used : ISO VG 68, Viscosity : 68 cSt @ 40 °C, Temp. @ test : 50 °C.

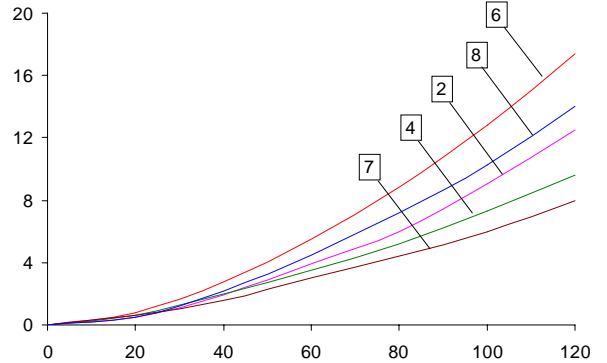
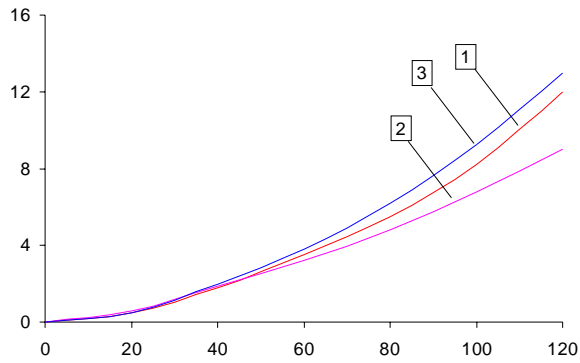


Table showing the relation between the spool type, direction of flow and curve in the above graph to be referred to.

Spool Type	P to A	P to B	A to T	B to T	P to T
A	5	5	-	-	-
B	5	5	-	-	-
C	3	3	5	5	-
D	3	3	4	4	-
E	3	3	4	4	-
H	1	1	2	2	-
J	3	3	4	4	-
L	3	3	4	4	-
P	1	1	7	8	6
F	1	1	8	7	6
G	-	-	-	-	-
M	1	1	5	5	-
U	3	3	4	4	-



**PILOT OPERATED
DIRECTIONAL CONTROL VALVE
DP10**

ENGINEERING

4

Ref. No. D32200

Ordering Code

4 DP 10 E S 20

3 Service port
4 Service port

Directional control valve
pilot operated

Size 10

Spool type (Refer chart)

Design code subject to
change. Installation
dimensions remain same.
for design code 20 thru 29.

S	Spring centred for 3 position valves
	Spring offset for 2 position valves



Spool chart

Type	Symbol	Crossover	Type	Symbol	Crossover
	a 0 A B P T			a 0 b A B P T	
A			L		
C			M		
D			P		
E			Q		
F			U		
G			V		
H					
J					

Note : Subplate to be ordered separately.



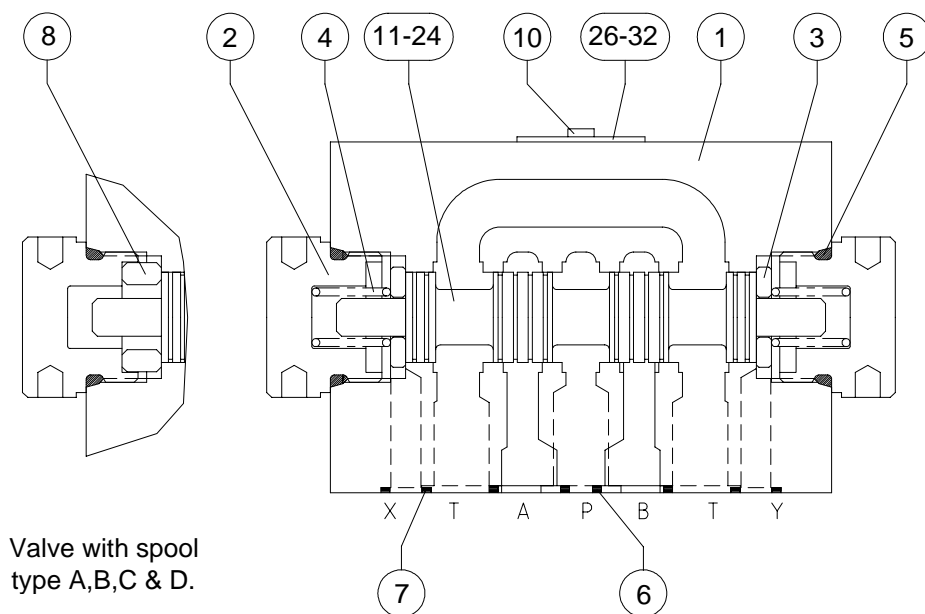
**PILOT OPERATED
DIRECTIONAL CONTROL VALVE
DP10**

SERVICE

5

Ref. No. D32200

Sectional view & Parts Detail



Valve with spool type A,B,C & D.

Sl. No	Description / size	Part No.	Qty	Sl. No	Description / size	Part No.	Qty
1	Subplate Body		1	17	Spool H		1
2	End Plug		2	18	Spool J		1
3	Spring Pad		1	19	Spool L		1
* 4	Spring (Code: 32306)	32306	2	20	Spool M		1
* 5	O'ring (Ø22 x 2.65)	32106	2	21	Spool Q		1
* 6	O'ring (Ø12 x 2)	32113	5	22	Spool T		1
* 7	O'ring (Ø12 x 2)	32207	2	23	Spool U		1
8	Stopper		1	24	Spool V		1
9	Interface Cap		1	26	Label Common		1
10	CRPH Screw		2	27	Label Type C & D		1
11	Spool A & B		1	28	Label Type E		1
12	Spool C		1	29	Label Type F		1
13	Spool D		1	30	Label Type G		1
14	Spool E		1	31	Label Type H		1
15	Spool F & P		1	32	Label Type J		1
16	Spool G		1				

Note : * Recommended seal kit. * & □ Recommended spare kit.
While ordering the individual spares / seal kit / spare kit give part.no.
and complete details of model code as punched on the pump body.



PILOT OPERATED
DIRECTIONAL CONTROL VALVE
DP10

SERVICE

6

Ref. No. D32200

