

AND VALVE

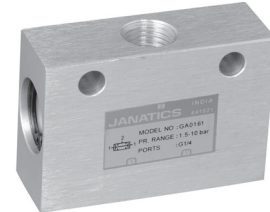
Series GA

Cat No GA - 01 - 01

AND VALVE - M5, G1/8, G1/4

Function

- AND valve delivers air at the outlet (A) only when air signal is present at both inputs (X and Y)
- If two signals of different pressure is applied, the lower pressure is connected to outlet (A)



Application

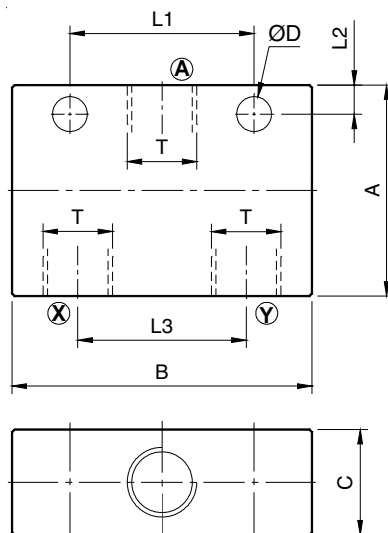
An AND valve (or dual pressure valve) is used in cases where at least 2 signals are required to be present before a function is executed. It can be used in safety circuits and logic controls.

Technical Specifications

Model	M5	1/8	1/4
Medium	Compressed air - Dry, Filtered, Lubricated		
Operating pressure range	1.5 - 10 bar		
Ambient Temperature	5° - 60° C		
Flow [®] (X → A) (Y → A)	100 lpm	400 lpm	525 lpm
Materials of construction	Aluminium, Nitrile, Brass, Plastic		

® Inlet pressure 6 bar, and pressure drop 1 bar

HYDRO PNEUMATIC ACCESSORIES
W: <http://hpa.net.in> E: inq@hpa.net.in



Sl. No	T	A	B	C	L1	L2	L3	ØD	Ordering No
1	M5	25	37	15	10	3.5	20	3.2	GA0170
2	G1/8	30	43	15	24	4	24	4.5	GA0160
3	G1/4	40	57	20	35	5.5	32	6.6	GA0161

How to Order

While ordering AND valve, mention the ordering number given in the corresponding tables.