



COUNTER BALANCE VALVE CB

ENGINEERING

1

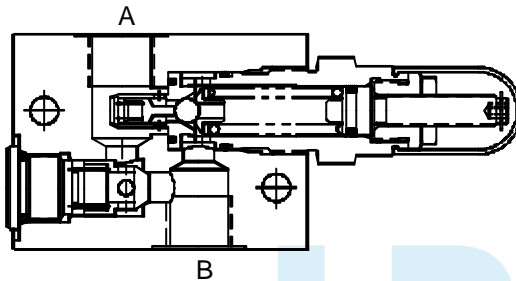
Ref. No. P02241
Release 07/2009

Description

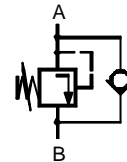
Counter balance valves are seat type valves. They offer free-flow from their port B to A and give leak free closure in opposite direction upto a predetermined pressure. This predetermined cracking pressure can be adjusted within its maximum specified range.



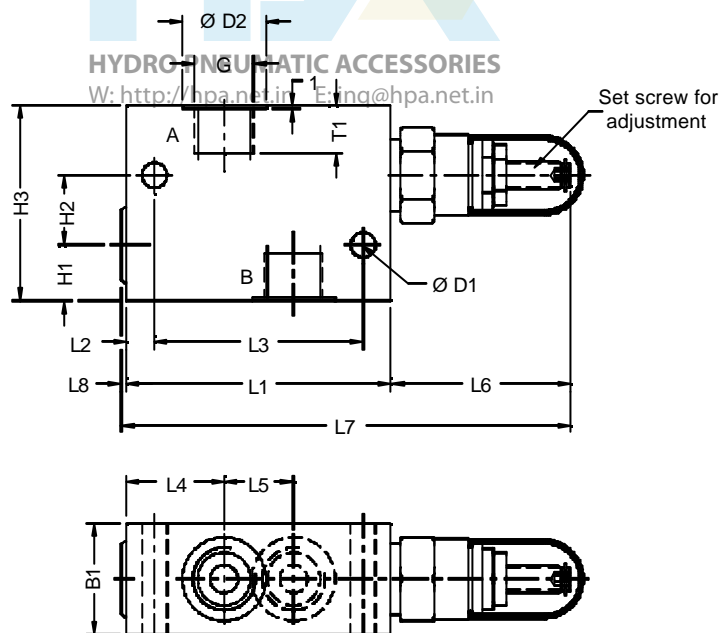
Section



Hydraulic Symbol



Unit dimension



Dimensions in mm.



| Size | L1 | L2 | L3 | L4 | L5 | L6 | L7 | L8 | H1 | H2 | H3 | B1 | G | ØD1 | ØD2 | T1 | Mass kg |
|------|-----|----|-----|----|----|----|-----|----|----|----|-----|----|------|-----|-----|----|---------|
| 10 | 95 | 10 | 75 | 35 | 25 | 58 | 156 | 3 | 23 | 25 | 70 | 40 | G1/2 | 9 | 30 | 17 | 1.95 |
| 20 | 140 | 10 | 110 | 40 | 45 | 74 | 218 | 4 | 25 | 50 | 100 | 60 | G1 | 11 | 44 | 19 | -- |

Polyhydron Pvt. Ltd.

78-80, Machhe Industrial Estate,
Machhe, Belgaum - 590 014. INDIA.

Phone : +91-(0)831-2411001
Fax : +91-(0)831-2411002
E-mail : polyhydron@gmail.com
Website : www.polyhydron.com



COUNTER BALANCE VALVE
CB

ENGINEERING

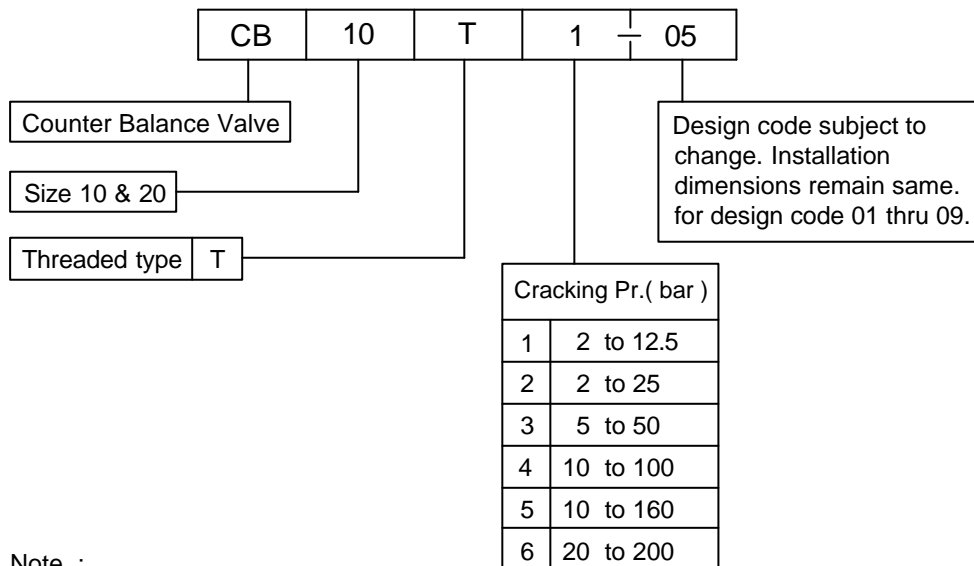
2

Ref. No. P02241

Technical specification

| | |
|--|---|
| Construction | Direct acting, seat type. |
| Mounting type | Threaded port body. |
| Mounting position | Optional |
| Direction of flow | From port A to B. |
| Flow handling capacity (Nominal) | Size 10 30 l/min. Size 20 115 l/min. |
| Operating pressure | 315 bar. |
| Cracking pressure | Refer ordering code. |
| Hydraulic medium | Mineral oil. |
| Viscosity range | 10 cSt to 380 cSt. |
| Fluid temperature range | -20 °C to +70 °C |
| Fluid cleanliness requirement | As per ISO 16/13. or better. |
| Mass | Refer individual table. |

Ordering code



Note :

Fixing screws and subplate to be ordered separately