

AIR CYLINDER

Series A12

Cat No A12 - 01 - 01

AIR CYLINDERS Double Acting Ø (125, 160) mm

Features

- Conforms to ISO 6431 / CETOP RP53P / VDMA 24562 standards.
- Adjustable cushioning at both ends.
- Wide varieties of mountings.
- Low friction.
- Long life.



Technical Specifications

Cylinder bore (mm)		Ø125	Ø160
Length of cushioning (mm)		40	40
Standard strokes* (mm)		50 80 100 125 160 200 250 300 320 400 500	
Medium		Compressed air – filtered – lubricated	
Working pressure		0.5 – 10 bar	
Medium temperature		5 ° - 80 ° c	
Materials of construction		Aluminium, Brass, Nitrile, Steel, Acetal, Iron, Bronze	

* For Non standard or longer stroke cylinders , contact your regional dealer or **JANATICS**

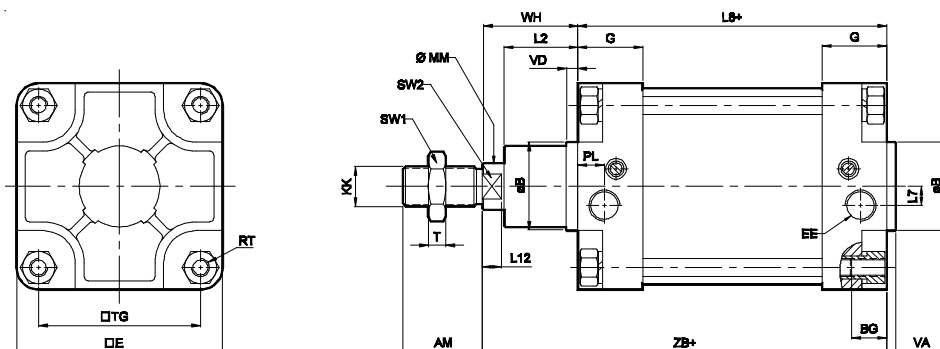
Output force (force in N: 1N = 0.1 kgf)

HYDRO PNEUMATIC ACCESSORIES

Cylinder bore in mm	Rod dia in mm		Working pressure in bar								
			2	3	4	5	6	7	8	9	10
Ø125	Ø32	Extend	2209	3313	4417	5522	6626	7731	8835	9940	11044
		Retract	2064	3096	4128	5160	6192	7224	8256	9288	10320
Ø160	Ø40	Extend	3619	5428	7238	9047	10857	12666	14476	16286	18095
		Retract	3392	5089	6785	8482	10178	11875	13571	15268	16964

(Above values have been worked out taking frictional loss into consideration)

Basic cylinder



+ Add stroke

Cylinder bore	KK	AM	MM	SW2	L12	SW1	T	Ø B e11	VD	VA	L2	□ E max	G	□ TG	RT	BG min	EE	PL	L7	WH ± 2.2	ZB	L8	Stroke tol
Ø125	M27 x 2	54	32	27	13	41	12	60	6	6	50	142	44	110	M12	20	G1/2	20	12	65	225 ± 1.2	160 ± 1.0	+4 0
Ø160	M36 x 2	72	40	36	16	55	14	65	6	6	60	182	51	140	M16	24	G3/4	26	15	80	260 ± 1.5	180 ± 1.1	

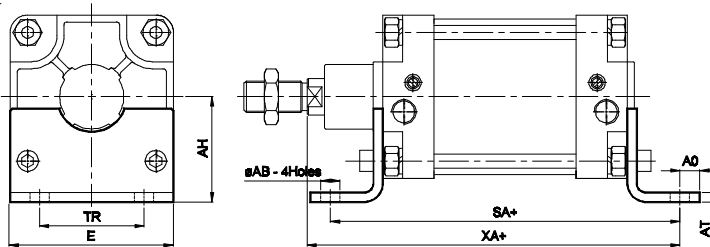
AIR CYLINDER

Series A12

Cat No A12 - 01 - 01

MOUNTINGS FOR AIR CYLINDER Series A12

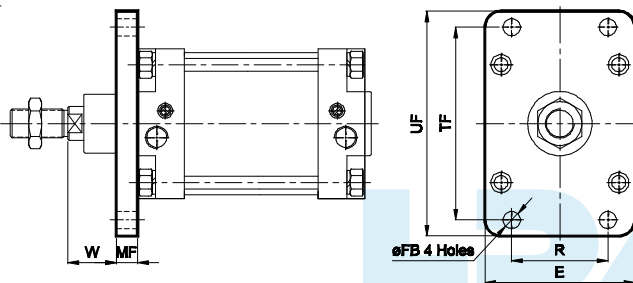
Foot mounting



+ Add stroke

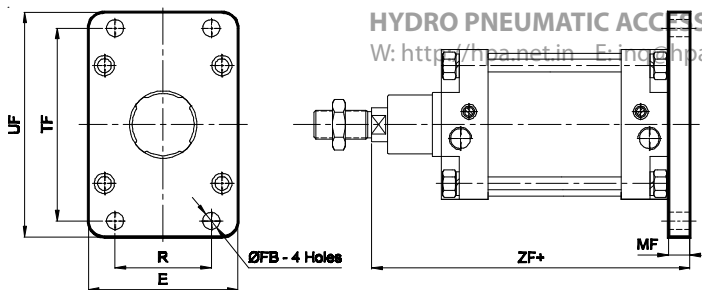
Cylinder bore	TR ±0.4	Ø AB H14	AH ±0.6	AO max.	AT	E	SA ± 2	XA ± 2
Ø125	90	16.5	90	17	8	140	250	270
Ø160	115	18.5	115	17	10	180	300	320

Front flange



Cylinder bore	TF JS14	R JS14	FB H13	MF	UF	E	W ± 2.5
Ø125	180	90	16	20	211	141	45
Ø160	230	115	18	20	276	181	60

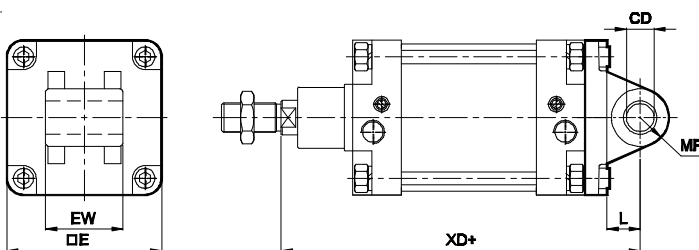
Rear flange



+ Add stroke

Cylinder bore	TF JS14	R JS14	FB H13	MF	UF	E	ZF ± 2
Ø125	180	90	16	20	211	141	245
Ø160	230	115	18	20	276	181	280

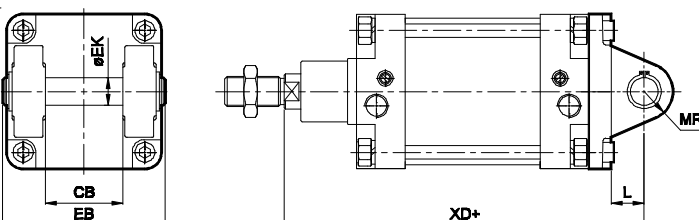
Male clevis



+ Add stroke

Cylinder bore	CD H9	EW - 0.5 - 1.2	L	MR	E max.	XD
Ø125	25	70	30	26	140	275 ± 1.5
Ø160	30	90	35	30	180	315 ± 1.8

Female clevis



+ Add stroke

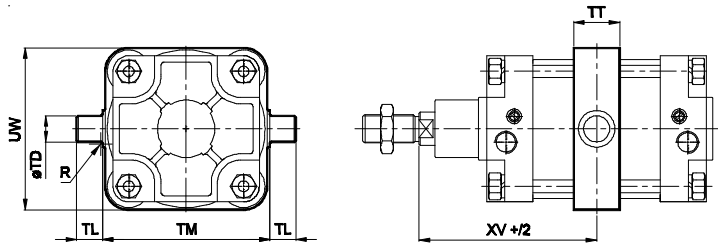
Cylinder bore	ø EK f 8	L	MR	EB max.	CB H14	XD
Ø125	25	30	26	147	70	275 ± 1.5
Ø160	30	35	30	190	90	315 ± 1.8

AIR CYLINDER

Series A12

Cat No A12 - 01 - 01

Centre trunnion

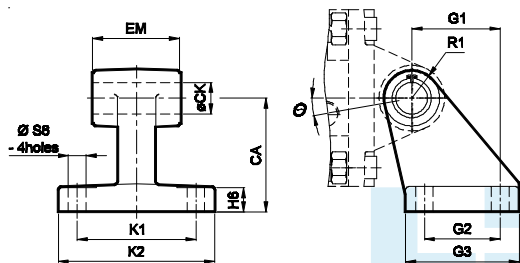


+ Add stroke

Cylinder bore	TD e9	TL h14	TM h14	UW	TT	R	XV ± 2.5
Ø125	25	25	160	155	44	2	145
Ø160	32	32	200	195	49	2.5	170

ACCESSORIES FOR AIR CYLINDER Series A12

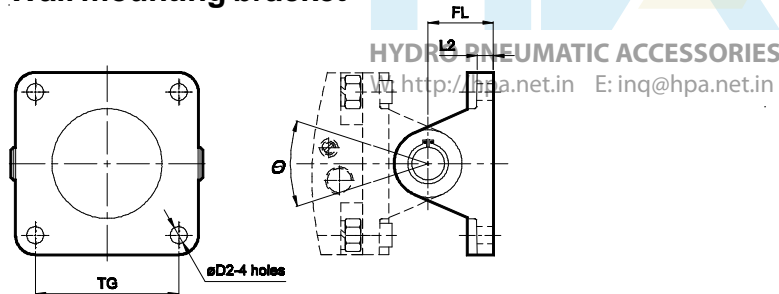
Clevis foot bracket (CETOP - RP 107 P)



Cylinder bore	K1 Js14	G2 Js14	S6 H13	CA Js14	CK H9	EM -0.5 -1.2	G1 ±0.3	H6	R1 max.	K2	G3	q°	Part no. @
Ø125	94	60	14	90	25	70	70	20	23.5	124	90	15	AA0125
Ø160	118	88	14	115	30	90	97	25	31.5	156	126	10	AA0160

@ Adoptable to cylinder with female clevis

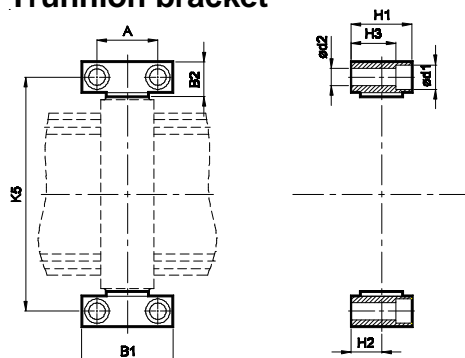
Wall mounting bracket



Cylinder bore	TG	D2	L2	FL	q°	Part no. @	Part no. #
Ø125	110	13	10	50	80	AV0125	AW0125
Ø160	140	17	10	55	80	AV0160	AW0160

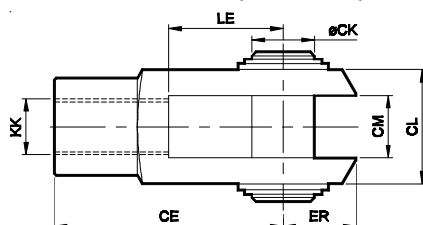
@ Adoptable to cylinder with male clevis
Adoptable to cylinder with female clevis

Trunnion bracket



Cylinder bore	B1	B2	A ± 0.3	d1	d2 H13	H1	H2 ± 0.2	H3	K5 Js14	Part no.
Ø125	75	28.5	50	20	14	50	25	37	192	AT100
Ø160	92	40	60	25	18	60	30	43	245	AT0160

Rod end Fork (ISO 8140)



Cylinder bore	KK	CE	CK f 8	CM B 12	LE	ER max.	CL	Part no.
Ø125	M27 x 2	110	30	30	55	45	55	AF030
Ø160	M36 x 2	144	35	35	72	53	70	AF035

AIR CYLINDER

Series A12

Cat No A12 - 01 - 01

How to order

A

Model		Cylinder bore (mm)		Stroke (mm)		Mountings	
12	Standard cylinder	125	- Ø 125	050	- 50	O	- Basic
		160	- Ø 160	080	- 80	L	- Foot Mounting
				100	- 100	F	- Front Flange
				125	- 125	R	- Rear Flange
				160	- 160	S	- Male Clevis
				200	- 200	D	- Female Clevis
				250	- 250	T	- Center Trunnion
				300	- 300		
				320	- 320		
				400	- 400		
				500	- 500		

Example:

Ordering no. for standard cylinder with Ø125 bore, 50mm stroke with female clevis mounting: **A12 125 050 D**






Note:

If ordered as 125 dia, 50 mm stroke cylinder, Basic cylinder **A12 125 050 O** will be supplied.

For repeat order when the details are taken from cylinder nameplate, mention the mounting style separately.

For ordering **Accessories** refer corresponding tables for part numbers.

For ordering individual **Mounting** kits (If needed separately) the order numbers are as below

Cylinder bore	Foot mounting	Front flange	Rear flange	Male clevis	Female clevis
					
Ø125	ML0125	MF0125	MF0125	MS0125	MD0125
Ø160	ML0160	MF0160	MF0160	MS0160	MD0160

For your special requirements of cylinders or for further informations contact your regional dealer or **JANATICS**