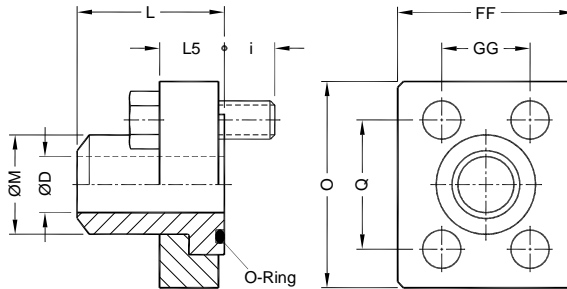


# Buttweld Swivel Flanges

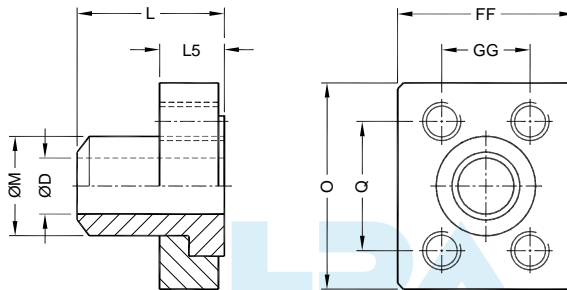
SAO / SAOC

Dimensions in mm

Mounting Interface conforms to ISO 6162



Flanges  
Model : SAO



Counter Flanges  
Model : SAOC

## Standard Pressure Series (Code 61)

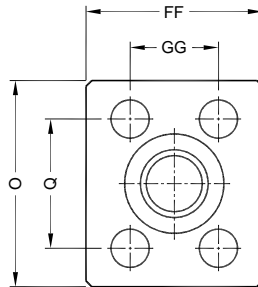
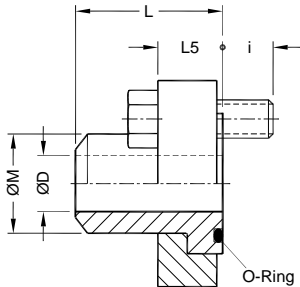
Part No. Flanges	Part No. Counter Flanges	Size	Pipe (Sch)	Pr. (bar)	ØM	ØD	O	Q	FF	GG	L5	i	L	O-Ring (Viton) 90 ± 5 Shore	Hex. Bolts (10.9)
SAO-21.3-80	SAOC-21.3-80	1/2"	80	288	21.3	14	54	38.1	46	17.5	13	12	30	19.0 x 3.55	M8 x 25
SAO-21.3-160	SAOC-21.3-160		160	345		12									
SAO-26.6-80	SAOC-26.6-80	3/4"	80	246	26.6	19	65	47.6	52	22.3	15	15	35	25.0 x 3.55	M10 x 30
SAO-26.6-160	SAOC-26.6-160		160	345		15									
SAO-33.4-80	SAOC-33.4-80	1"	80	246	33.4	24	70	52.4	59	26.2	15	15	40	32.5 x 3.55	M10 x 30
SAO-33.4-160	SAOC-33.4-160		160	345		21									
SAO-42.2-80	SAOC-42.2-80	1.1/4"	80	211	42.2	32	79	58.7	73	30.2	15	15	45	37.5 x 3.55	M10 x 30
SAO-42.2-160	SAOC-42.2-160		160	276		30									
SAO-48.3-80	SAOC-48.3-80	1.1/2"	80	197	48.3	38	94	69.9	83	35.7	17	18	50	47.5 x 3.55	M12 x 35
SAO-60.3-80	SAOC-60.3-80	2"	80	176	60.3	49	102	77.8	97	42.9	17	18	60	56.0 x 3.55	M12 x 35
SAO-60.3-160	SAOC-60.3-160		160	207		43									
SAO-73.0-40	SAOC-73.0-40	2.1/2"	40	134	73.0	63	114	88.9	109	50.8	22	18	70	69.0 x 3.55	M12 x 40
SAO-73.0-80	SAOC-73.0-80		80	172		59									
SAO-88.9-40	SAOC-88.9-40	3"	40	113	88.9	78	135	106.4	131	61.9	26	24	80	85.0 x 3.55	M16 x 50
SAO-88.9-80	SAOC-88.9-80		80	138		74									
SAO-101.6-40	SAOC-101.6-40	3.1/2"	40	34	101.6	90	152	120.7	140	69.9	26	24	80	97.5 x 3.55	M16 x 50
SAO-114.3-40	SAOC-114.3-40	4"	40	34	114.3	102	162	130.2	152	77.8	26	24	80	112.0 x 3.55	M16 x 50
SAO-141.3-40	SAOC-141.3-40	5"	40	34	141.3	128	184	152.4	181	92.1	31	24	80	136.0 x 3.55	M16 x 55

# Buttweld Swivel Flanges

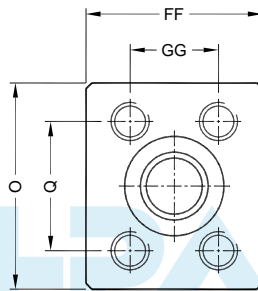
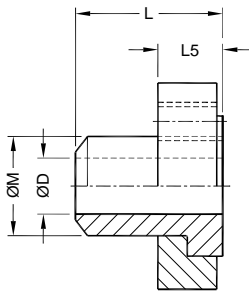
HAO / HAOC

Dimensions in mm

Mounting Interface conforms to ISO 6162



Flanges  
Model : HAO



Counter Flanges  
Model : HAOC

## High Pressure Series (Code 62)

HYLOC PNEUMATIC ACCESSORIES

Part No. Flanges	Part No. Counter Flanges	Size	Pipe (Sch)	Pr. (bar)	ØM	ØD	O	Q	FF	GG	L5	i	L	O-Ring (Viton) 90 ±5 Shore	Hex. Bolts (10.9)
HAO-21.3-160	HAOC-21.3-160	1/2"	160	414	21.3	12	56	40.5	48	18.2	18	12	40	19.0 x 3.55	M8 x 30
HAO-26.6-160	HAOC-26.6-160	3/4"	160	414	26.6	16	71	50.8	60	23.8	20	15	45	25.0 x 3.55	M10 x 35
HAO-33.4-160	HAOC-33.4-160	1"	160	401	33.4	21	81	57.2	70	27.8	27	18	50	32.5 x 3.55	M12 x 45
HAO-42.2-160	HAOC-42.2-160	1.1/4"	160	310	42.2	30	95	66.6	78	31.8	27	18	55	37.5 x 3.55	M12 x 45
HAO-42.2-XXS	HAOC-42.2-XXS		XXS	414		23									
HAO-48.3-160	HAOC-48.3-160	1.1/2"	160	317	48.3	34	113	79.3	95	36.5	31	24	60	47.5 x 3.55	M16 x 55
HAO-48.3-XXS	HAOC-48.3-XXS		XXS	414		28									
HAO-60.3-160	HAOC-60.3-160	2"	160	324	60.3	43	133	96.8	114	44.5	40	30	70	56.0 x 3.55	M20 x 70
HAO-60.3-XXS	HAOC-60.3-XXS		XXS	414		38									
HAO-73.0-160	HAOC-73.0-160	2.1/2"	160	296	73.0	54	175	123.8	149	58.7	47	33	90	69.0 x 3.55	M22 x 80
HAO-73.0-XXS	HAOC-73.0-XXS		XXS	414		45									
HAO-88.9-160	HAOC-88.9-160	3"	160	288	88.9	66	216	152.4	178	71.4	65	45	110	85.0 x 3.55	M30 x 110
HAO-88.9-XXS	HAOC-88.9-XXS		XXS	414		58									