

SHUT OFF VALVE

Series GS3

Cat No GS3 - 01 - 01

SHUT OFF VALVE (Knob operated ball valves) - G1/8, 1/4, 3/8, 1/2

Features

- Ball type
- In line mounting
- Easy and smooth operation
- Assembly on rigid pipe system
- Maintenance free
- Bubble tight sealing



Application

Ball valves can be used in all compressed air applications. Some of the pneumatic applications include,

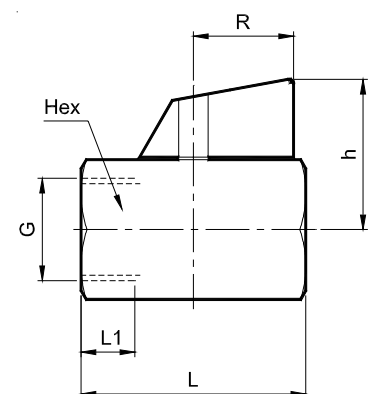
- All compressed airlines
- Pneumatic circuits in industry
- Pneumatic control panels
- Machine tools
- Pneumatic systems of machinery

Technical Specification

Port size	G1/8	G1/4	G3/8	G1/2
Medium *	Compressed air, Lubricated / Non lubricated			
Max. working pressure	10 bar W: http://hpa.net.in E: inq@hpa.net.in			
Ambient / Medium Temperature	5° - 60° C			
Materials of construction	Brass, NBR, PTFE, ABS			
NW (mm)	6	8	10	15
Flow rate lts/min	4700	4700	4700	5900
Weight (kg)	0.11	0.10	0.09	0.13

* Medium - for other medium requirements, please contact factory

Port size G	Hex	L1	h	L	R	Ordering No
1/8	21	8	29	41	20.5	GS3205K60
1/4	21	10	29	41	20.5	GS3208K61
3/8	21	10	29	41	20.5	GS3209K62
1/2	25	11	31	46	20.5	GS3210K63



Precautions

1. Note the direction of flow before installation & connect piping accordingly
2. Flush piping for dirt, rust and other foreign particles
3. Install in clean atmosphere

How to Order

While ordering Shut off valve, mention the ordering number given in the corresponding tables.

Subject to change