

# SHUT OFF VALVE

## Series GS3

Cat No GS3 - 01 - 02

### SHUT OFF VALVE ( Hand lever operated ball valves ) - G1/4, 3/8, 1/2, 3/4, 1, 1¼, 1½, 2

#### Features

- Ball type
- In line mounting
- Easy and smooth operation
- Assembly on rigid pipe system
- Maintenance free
- Bubble tight sealing



#### Application

Ball valves can be used in all compressed air applications. Some of the pneumatic applications include,

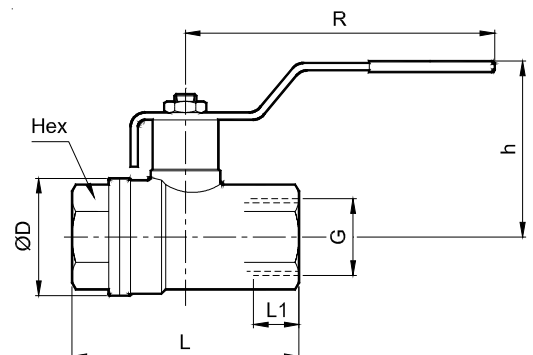
- All compressed airlines
- Pneumatic circuits in industry
- Pneumatic control panels
- Machine tools
- Pneumatic systems of machinery

#### Technical Specification

Port size	G1/4	G3/8	G1/2	G3/4	G1	G1¼	G1½	G2
Medium *	Compressed air, lubricated / Non lubricated							
Max. working pressure	10 bar							
Ambient / Medium Temperature	5° - 60° C							
Materials of construction	Brass, NBR, PTFE, Steel							
NW (mm)	8	10	15	20	25	32	40	50
Flow rate lts/min	5900	6600	17900	32400	47300	97900	253000	291500
Weight (kg)	0.15	0.13	0.16	0.27	0.40	0.66	0.95	1.58

\* Medium - for other medium requirements, please contact factory

Port size G	Hex	L1	h	L	R	ØD	Ordering No
1/4	20	11	44.5	51.5	98	23	GS3208H61
3/8	20	11.4	44.5	51.5	98	23	GS3209H62
1/2	25	10	40	47.5	84.5	30	GS3210H63
3/4	31	10	52.5	53	110	36	GS3211H64
1	38	12.5	62.5	65.5	110	43.5	GS3212H65
1¼	48	14	68.5	76.5	140	53	GS3213H66
1½	54	16	73.5	89	140	65	GS3214H67
2	67	17	85	103	170	80	GS3215H68



#### Precautions

1. Note the direction of flow before installation & connect piping accordingly
2. Flush piping for dirt, rust and other foreign particles
3. Install in clean atmosphere

#### How to Order

While ordering Shut off valve, mention the ordering number given in the corresponding tables. Subject to change