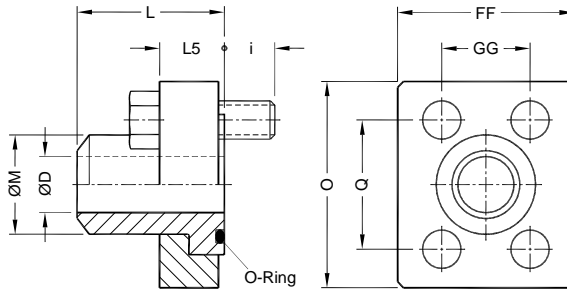


Buttweld Swivel Flanges

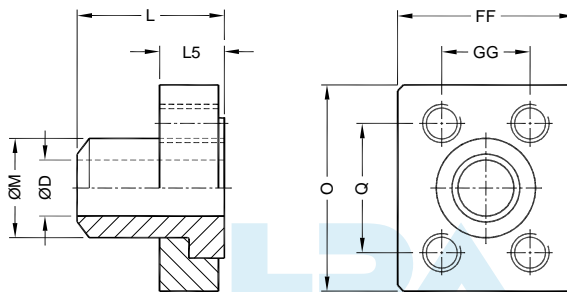
SAO / SAOC

Dimensions in mm

Mounting Interface conforms to ISO 6162



Flanges
Model : SAO



Counter Flanges
Model : SAOC

Standard Pressure Series (Code 61)

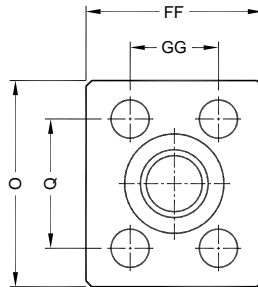
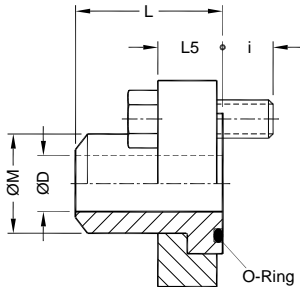
| Part No. Flanges | Part No. Counter Flanges | Size | Pipe (Sch) | Pr. (bar) | ØM | ØD | O | Q | FF | GG | L5 | i | L | O-Ring (Viton) 90 ± 5 Shore | Hex. Bolts (10.9) |
|------------------|--------------------------|--------|------------|-----------|-------|-----|-----|-------|-----|------|----|----|----|-----------------------------|-------------------|
| SAO-21.3-80 | SAOC-21.3-80 | 1/2" | 80 | 288 | 21.3 | 14 | 54 | 38.1 | 46 | 17.5 | 13 | 12 | 30 | 19.0 x 3.55 | M8 x 25 |
| SAO-21.3-160 | SAOC-21.3-160 | | 160 | 345 | | 12 | | | | | | | | | |
| SAO-26.6-80 | SAOC-26.6-80 | 3/4" | 80 | 246 | 26.6 | 19 | 65 | 47.6 | 52 | 22.3 | 15 | 15 | 35 | 25.0 x 3.55 | M10 x 30 |
| SAO-26.6-160 | SAOC-26.6-160 | | 160 | 345 | | 15 | | | | | | | | | |
| SAO-33.4-80 | SAOC-33.4-80 | 1" | 80 | 246 | 33.4 | 24 | 70 | 52.4 | 59 | 26.2 | 15 | 15 | 40 | 32.5 x 3.55 | M10 x 30 |
| SAO-33.4-160 | SAOC-33.4-160 | | 160 | 345 | | 21 | | | | | | | | | |
| SAO-42.2-80 | SAOC-42.2-80 | 1.1/4" | 80 | 211 | 42.2 | 32 | 79 | 58.7 | 73 | 30.2 | 15 | 15 | 45 | 37.5 x 3.55 | M10 x 30 |
| SAO-42.2-160 | SAOC-42.2-160 | | 160 | 276 | | 30 | | | | | | | | | |
| SAO-48.3-80 | SAOC-48.3-80 | 1.1/2" | 80 | 197 | 48.3 | 38 | 94 | 69.9 | 83 | 35.7 | 17 | 18 | 50 | 47.5 x 3.55 | M12 x 35 |
| SAO-60.3-80 | SAOC-60.3-80 | 2" | 80 | 176 | 60.3 | 49 | 102 | 77.8 | 97 | 42.9 | 17 | 18 | 60 | 56.0 x 3.55 | M12 x 35 |
| SAO-60.3-160 | SAOC-60.3-160 | | 160 | 207 | | 43 | | | | | | | | | |
| SAO-73.0-40 | SAOC-73.0-40 | 2.1/2" | 40 | 134 | 73.0 | 63 | 114 | 88.9 | 109 | 50.8 | 22 | 18 | 70 | 69.0 x 3.55 | M12 x 40 |
| SAO-73.0-80 | SAOC-73.0-80 | | 80 | 172 | | 59 | | | | | | | | | |
| SAO-88.9-40 | SAOC-88.9-40 | 3" | 40 | 113 | 88.9 | 78 | 135 | 106.4 | 131 | 61.9 | 26 | 24 | 80 | 85.0 x 3.55 | M16 x 50 |
| SAO-88.9-80 | SAOC-88.9-80 | | 80 | 138 | | 74 | | | | | | | | | |
| SAO-101.6-40 | SAOC-101.6-40 | 3.1/2" | 40 | 34 | 101.6 | 90 | 152 | 120.7 | 140 | 69.9 | 26 | 24 | 80 | 97.5 x 3.55 | M16 x 50 |
| SAO-114.3-40 | SAOC-114.3-40 | 4" | 40 | 34 | 114.3 | 102 | 162 | 130.2 | 152 | 77.8 | 26 | 24 | 80 | 112.0 x 3.55 | M16 x 50 |
| SAO-141.3-40 | SAOC-141.3-40 | 5" | 40 | 34 | 141.3 | 128 | 184 | 152.4 | 181 | 92.1 | 31 | 24 | 80 | 136.0 x 3.55 | M16 x 55 |

Buttweld Swivel Flanges

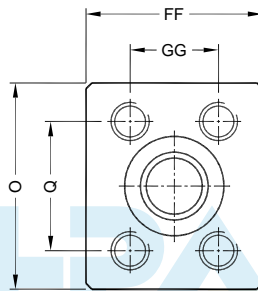
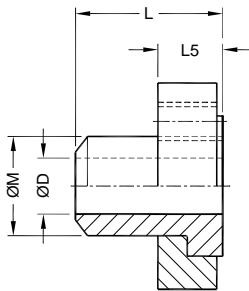
HAO / HAOC

Dimensions in mm

Mounting Interface conforms to ISO 6162



Flanges
Model : HAO



Counter Flanges
Model : HAOC

High Pressure Series (Code 62)

HYLOC PNEUMATIC ACCESSORIES

| Part No. Flanges | Part No. Counter Flanges | Size | Pipe (Sch) | Pr. (bar) | ØM | ØD | O | Q | FF | GG | L5 | i | L | O-Ring (Viton) 90 ±5 Shore | Hex. Bolts (10.9) |
|------------------|--------------------------|--------|------------|-----------|------|----|-----|-------|-----|------|----|----|-----|----------------------------|-------------------|
| HAO-21.3-160 | HAOC-21.3-160 | 1/2" | 160 | 414 | 21.3 | 12 | 56 | 40.5 | 48 | 18.2 | 18 | 12 | 40 | 19.0 x 3.55 | M8 x 30 |
| HAO-26.6-160 | HAOC-26.6-160 | 3/4" | 160 | 414 | 26.6 | 16 | 71 | 50.8 | 60 | 23.8 | 20 | 15 | 45 | 25.0 x 3.55 | M10 x 35 |
| HAO-33.4-160 | HAOC-33.4-160 | 1" | 160 | 401 | 33.4 | 21 | 81 | 57.2 | 70 | 27.8 | 27 | 18 | 50 | 32.5 x 3.55 | M12 x 45 |
| HAO-42.2-160 | HAOC-42.2-160 | 1.1/4" | 160 | 310 | 42.2 | 30 | 95 | 66.6 | 78 | 31.8 | 27 | 18 | 55 | 37.5 x 3.55 | M12 x 45 |
| HAO-42.2-XXS | HAOC-42.2-XXS | | XXS | 414 | | 23 | | | | | | | | | |
| HAO-48.3-160 | HAOC-48.3-160 | 1.1/2" | 160 | 317 | 48.3 | 34 | 113 | 79.3 | 95 | 36.5 | 31 | 24 | 60 | 47.5 x 3.55 | M16 x 55 |
| HAO-48.3-XXS | HAOC-48.3-XXS | | XXS | 414 | | 28 | | | | | | | | | |
| HAO-60.3-160 | HAOC-60.3-160 | 2" | 160 | 324 | 60.3 | 43 | 133 | 96.8 | 114 | 44.5 | 40 | 30 | 70 | 56.0 x 3.55 | M20 x 70 |
| HAO-60.3-XXS | HAOC-60.3-XXS | | XXS | 414 | | 38 | | | | | | | | | |
| HAO-73.0-160 | HAOC-73.0-160 | 2.1/2" | 160 | 296 | 73.0 | 54 | 175 | 123.8 | 149 | 58.7 | 47 | 33 | 90 | 69.0 x 3.55 | M22 x 80 |
| HAO-73.0-XXS | HAOC-73.0-XXS | | XXS | 414 | | 45 | | | | | | | | | |
| HAO-88.9-160 | HAOC-88.9-160 | 3" | 160 | 288 | 88.9 | 66 | 216 | 152.4 | 178 | 71.4 | 65 | 45 | 110 | 85.0 x 3.55 | M30 x 110 |
| HAO-88.9-XXS | HAOC-88.9-XXS | | XXS | 414 | | 58 | | | | | | | | | |