

# QUICK EXHAUST VALVE

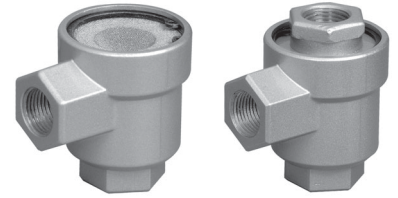
## Series GQ

Cat No GQ - 01 - 01

### QUICK EXHAUST VALVE - M5, G1/8, G1/4, G3/8, G1/2

#### Features

- ❑ Increase the speed of the cylinder
- ❑ With / without silencer
- ❑ Connection - M5, G1/8, G1/4, G3/8, G1/2
- ❑ Type GQ01 series is with silencer to reduce the exhaust noise



#### Function

These Quick exhaust valves when fitted to cylinder ports will result in increased speed of the cylinder. The exhaust air is directly connected to atmosphere through a bigger hole, instead of exhaust air going through the directional valve.

#### Technical Specifications

Type	Silencer type					Plug type					
Model	M5	G1/8	G1/4	G3/8	G1/2	M5	G1/8	G1/4	G3/8	G1/2	
Medium	Compressed air - Dry, Filtered, Lubricated										
Flow <sup>@</sup> (lpm)	1 → 2	80	350	1200	3250	4300	80	350	1200	3250	4300
	2 → 3 **	300	1000	3000	5500	9000	150	800	2000	3250	4750
Exhaust noise (db)	80	86	85	83	86	---					
Operating pressure range (bar)	1 to 10	0.5 to 10				1 to 10	0.5 to 10				
Ambient temperature	5° - 60° C										
Materials of construction	Aluminium, Nitrile, Brass										

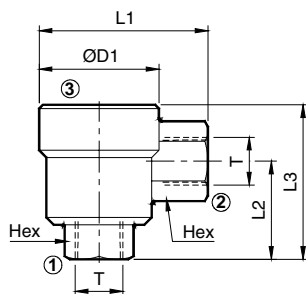
@ Inlet pressure 6 bar, and pressure drop 1 bar

\*\* Pressure 6 bar

HYDRO PNEUMATIC ACCESSORIES

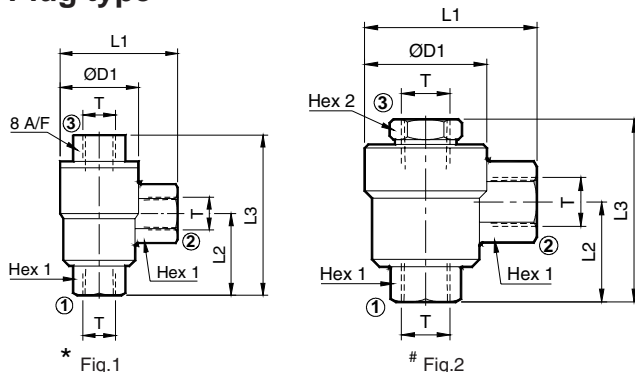
W: <http://hpa.net.in> E: [inq@hpa.net.in](mailto:inq@hpa.net.in)

#### Silencer type



Thread T	ØD1	L1	L2	L3	Hex	Ordering No
M5 x 0.8	13	18	12.5	23.5	8	GQ0170
G1/8	25	35.5	21	34.5	16	GQ0150
G1/4	33	46.5	27	42.5	19	GQ0151
G3/8	46	60	35	56.5	24	GQ0152
G1/2	55	73	42.5	68	32	GQ0153

#### Plug type



Thread T	ØD1	L1	L2	L3	Hex 1	Hex 2	Ordering No
* M5 x 0.8	13	18	12.5	25	8	-	GQ0270
# G1/8	25	35.5	21	39	16	14	GQ0250
# G1/4	33	46.5	27	50	19	17	GQ0251
# G3/8	46	60	35	67	24	24	GQ0252
# G1/2	55	73	42.5	79	32	32	GQ0253

#### How to Order

While ordering Quick Exhaust Valve, mention the ordering number given in the corresponding tables.

Subject to change