



# PRESSURE CONTROL VALVE DPC

ENGINEERING

1

Ref. No. P03234

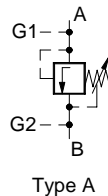
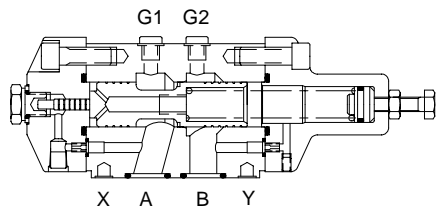
Release 02/2001

## Description

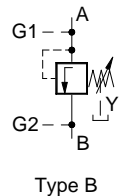
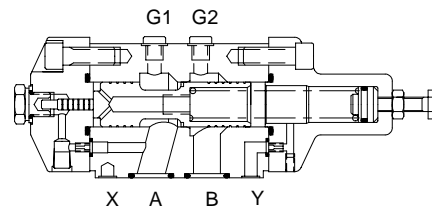
Pressure control valves are direct operated hydraulically cushioned valves. These are used to control sequencing, unloading or back pressure of oil flow in a hydraulic system. The control can be initiated by sensing the pressure rise internally (directly from its inlet port A) or remotely (from its remote pressure control port X). The valves with auxiliary pilot pressure port P (model DPC \* E/F/G/H) can be actuated by lower remote pressure than that is required at normal remote pressure control port.



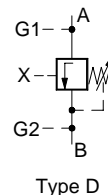
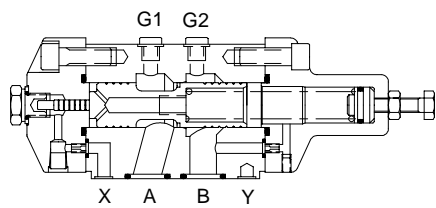
## Section



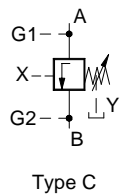
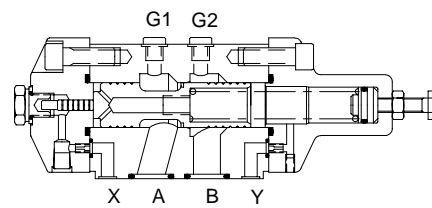
Type A



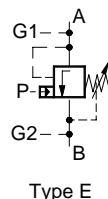
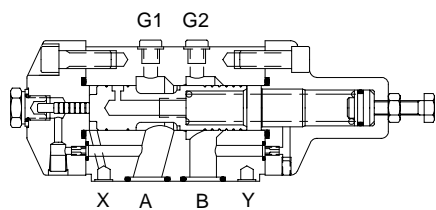
Type B



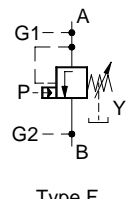
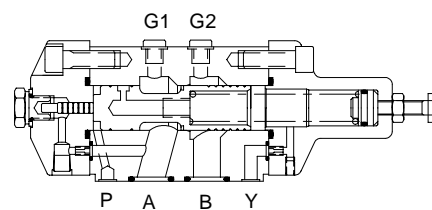
Type D



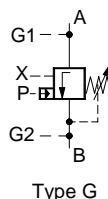
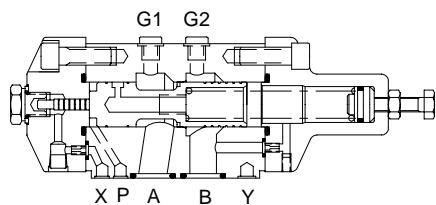
Type C



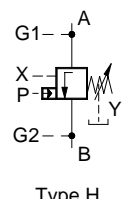
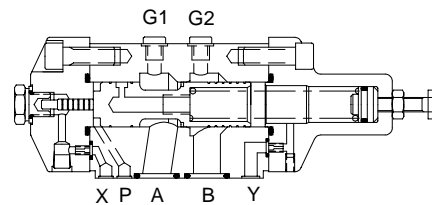
Type E



Type F



Type G



Type H

**Polyhydron Pvt. Ltd.**  
78-80, Machhe Industrial Estate,  
Machhe, Belgaum - 590 014, INDIA.

**Phone** : +91-(0)831-411001  
**Fax** : +91-(0)831-411002  
**E-mail** : polyhydron@vsnl.com  
**Website** : www.polyhydron.com



# PRESSURE CONTROL VALVE DPC

ENGINEERING

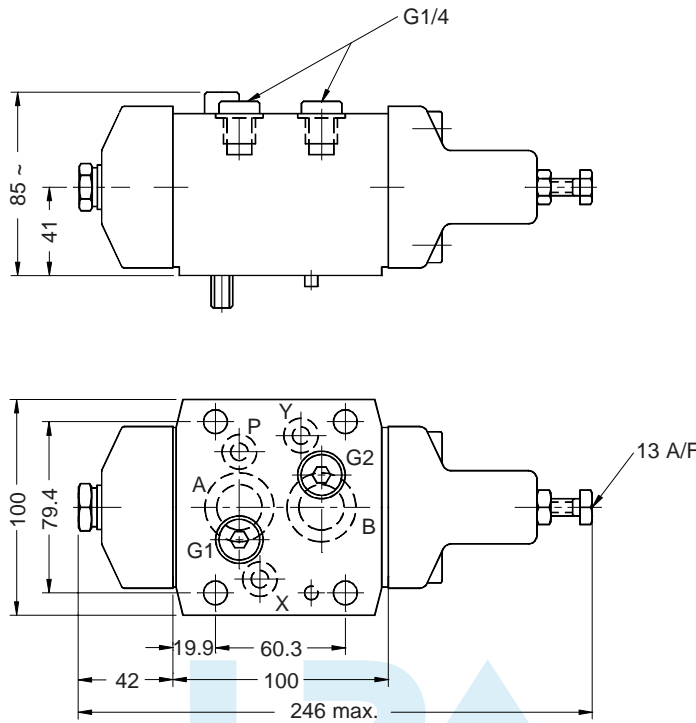
2

Ref. No. P03234

## Unit dimension

### Valve

Dimensions in mm.

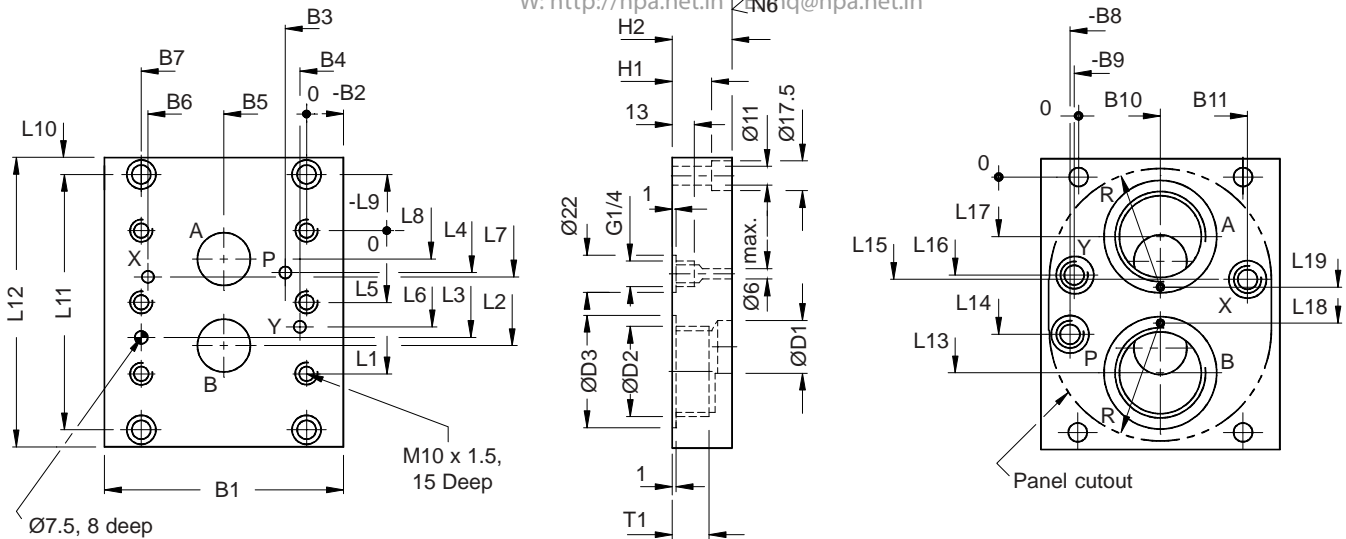


Note : Valve fixing screws M10 x 90L

### Subplate

HYDRO PNEUMATIC ACCESSORIES

W: <http://hpa.net.in> | [info@hpa.net.in](mailto:info@hpa.net.in)



Use M10 x 1.5 x 40L S.H.C. screw 10.9 grade. Tightening torque 77 Nm.

Size	Model	Mass Kg	B1	-B2	B3	B4	B5	B6	B7	-B8	-B9	B10	B11	ØD1	ØD2	ØD3	H1	H2	L1	L2
20	1SP08G06	5.2	112	-16.3	14	6.4	39.7	73	79.4	-3	-3	39.7	75	22	G 3/4	36	25	45	60.3	49.2
	1SP08G08	5.2	112	-16.3	14	6.4	39.7	73	79.4	-3	-3	39.7	75	22	G 1	44	25	45	60.3	49.2

Size	Model	L3	L4	L5	L6	L7	L8	-L9	L10	L11	L12	L13	L14	L15	L16	L17	L18	L19	R	T1
20	1SP08G06	44.5	11.1	--	39.7	20.8	11.1	-22	16	104	136	77	39	42.6	64	27	57	47	52	16
	1SP08G08	44.5	11.1	--	39.7	20.8	11.1	-22	16	104	136	82	39	42.6	64	22	57	47	52	18



# PRESSURE CONTROL VALVE DPC

ENGINEERING

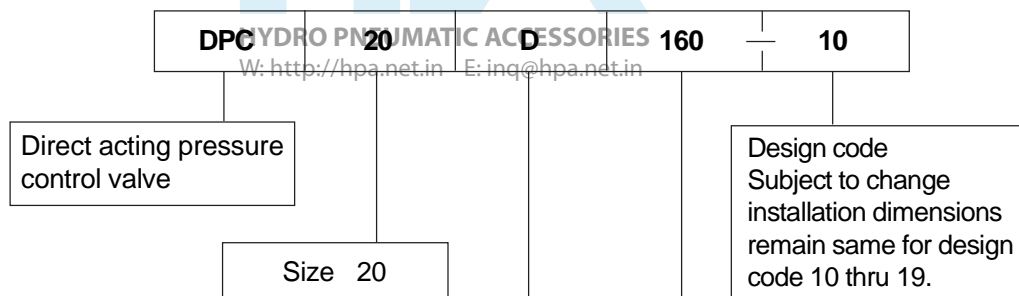
3

Ref. No. P03234

## Technical specification

Construction .....	Direct actuated, spool type with hydraulic cushioning.
Mounting .....	Subplate mounting
Mounting position .....	Optional
Direction of Flow .....	Port A to port B
Maximum working pressure .....	For valves with internal drain A, X & P ..... 350 bar. B ..... To be piped directly to tank at an atmospheric pressure. For valves with external drain A, B & X ..... 350 bar. Y ..... To be piped directly to tank at an atmospheric pressure.
Pilot pressure required at auxiliary remote control port P. ....	Minimum 12% of the set pressure for valve, with operating pressure 100 or 50 bar. Minimum 7% of the set pressure for valve with operating pressure 160 bar.
Fluid temperature range .....	-10 °C to +80 °C
Viscosity range .....	10 cSt to 380 cSt.
Fluid cleanliness requirement .....	As per ISO 16/13.
Flow handling capacity .....	160 l/min.
Mass .....	7.5 kg.

## Ordering code



A	Back pr. valve directly operated internal drain.
B	Sequence valve directly operated external drain.
C	Sequence valve remotely controlled external drain.
D	Unloading valve remotely controlled internal drain.
E	Back pr. valve directly operated with auxiliary remote control P, connection internal drain.
F	Back pr. valve directly operated with auxiliary remote control P, connection external drain.
G	Back pr. valve remotely controlled, with auxiliary remote control P, connection internal drain.
H	Back pr. valve remotely controlled with auxiliary remote control P, connection external drain.

Max. pr.	Range.
160 bar.	40 to 160
100 bar.	25 to 100
50 bar.	13 to 50

Note : Subplate to be ordered separately.

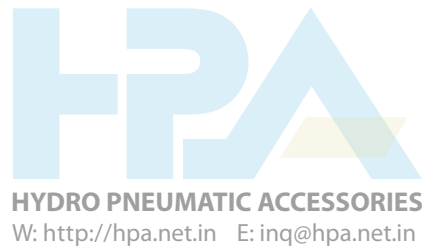


PRESSURE CONTROL VALVE  
DPC

ENGINEERING

4

Ref. No. P03234



All rights reserved.  
Subject to revision.

P03234