

INLINE SLIDE VALVE

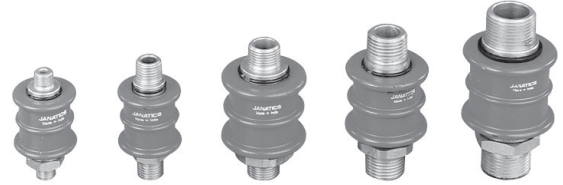
Series GS1

Cat No GS1 - 01

IN LINE SLIDE VALVE R 1/8, R 1/4, R 3/8, R 1/2, R3/4

Features

- ❑ Inline mounted
- ❑ Sleeve type, saves space
- ❑ Smooth, easy operation



Application

These valves can be used at the inlet of pneumatic tools like screwdriver, grinder etc., pneumatic systems and near machineries using pneumatic systems, for quick and convenient connecting - disconnecting of compressed air.

Technical Specifications

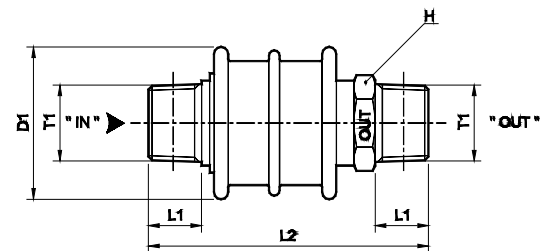
| | | | | | |
|----------------------------------|-----------------------------|-------|-------|-------|-------|
| Ordering No | GS150 | GS151 | GS152 | GS153 | GS154 |
| Size | R1/8 | R1/4 | R3/8 | R1/2 | R3/4 |
| Medium | Compressed air, filtered | | | | |
| Max Working pressure | 10 bar | | | | |
| Ambient / Medium temperature | 5° - 60° C | | | | |
| Materials of construction | Brass , Aluminium , Nitrile | | | | |
| NW mm | 5 | 7 | 11 | 13 | 20 |
| Flow rate lts / min [®] | 500 | 1000 | 2800 | 4500 | 10000 |
| Weight Kg | 0.088 | 0.090 | 0.224 | 0.249 | 0.370 |

[®] Inlet pressure 6 bar, and pressure drop 1 bar
HYDRO PNEUMATIC ACCESSORIES
W: <http://hpa.net.in> E: inquiry@hpa.net.in

Operation

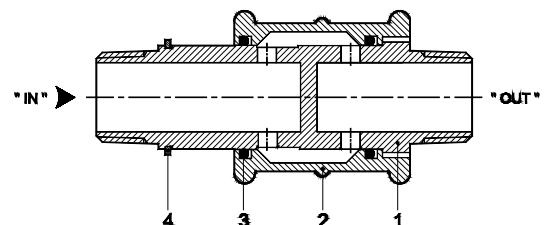
Moving the sleeve towards " OUT ", connects the air line to the system and moving the sleeve in the opposite direction, will close the inlet port and exhaust the down stream air.

| Ordering No | T1 | D1 | L1 | L2 | H(A/F) |
|-------------|------|----|----|-----|--------|
| GS150 | R1/8 | 31 | 8 | 57 | 17 |
| GS151 | R1/4 | 31 | 11 | 63 | 17 |
| GS152 | R3/8 | 43 | 12 | 74 | 27 |
| GS153 | R1/2 | 43 | 15 | 92 | 27 |
| GS154 | R3/4 | 50 | 18 | 109 | 32 |



Spare parts list

| Ref. no. | No. off | Part Name | Ordering no. for | | | | |
|----------|---------|-----------|------------------|--------|--------|--------|--------|
| | | | GS150 | GS151 | GS152 | GS153 | GS154 |
| 1 | 1 | Housing | - | - | - | - | - |
| 2 | 1 | Sleeve | - | - | - | - | - |
| 3 | 2 | O'ring | 650114 | 650114 | 650302 | 650302 | 650303 |
| 4 | 1 | Circlip | - | - | - | - | - |



Precautions

1. Note the direction of flow before installation and connect piping accordingly.
2. Flush pipings for dirt, dust, rust and other foreign particles.
3. Install in clean atmosphere.
4. Use teflon tape on taper threads . Ensure teflon tape does not enter the unit during tightening.

Subject to change