



LEVER OPERATED DIRECTIONAL CONTROL VALVE DL06 (CETOP 03)

ENGINEERING

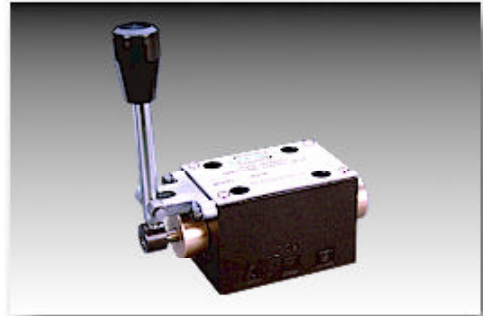
1

Ref. No. P09497

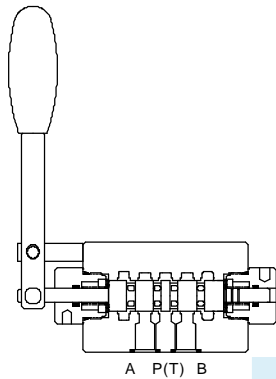
Release 09/2007

Description

Completely encapsulated mechanism for protection against dirt. Five chamber design for better reduction in dynamic forces and longer valve life. Available as spring centred, spring off-set or detented model. Operating head can be rotated by 90° x 4 around spool axis for flexibility in mounting. Valve mounting interface conforms to ISO 4401-03-02. Five chamber body and spool design provides low-pressure drop, with maximum performance. Balanced spool design ensures proper shifting force for maximum reliability and long life. All spools and bodies are interchangeable, simplifying maintenance.

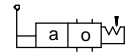


Section

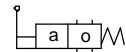


Hydraulic symbol

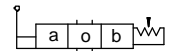
2 position detented



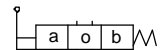
2 position spring offset



3 position detented

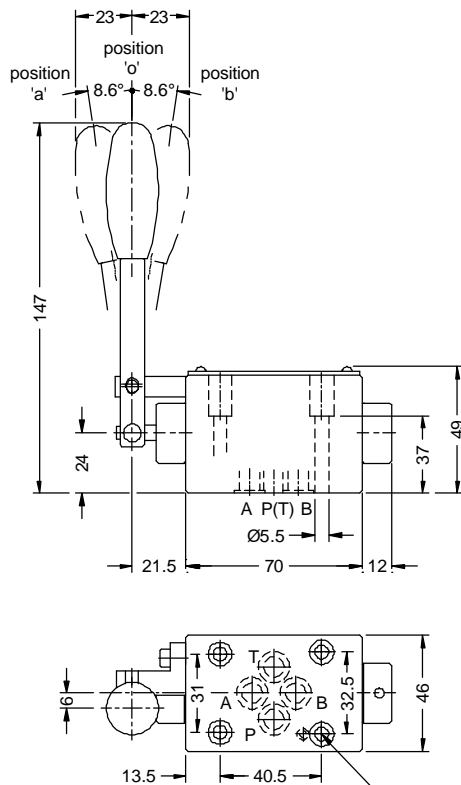


3 position spring centred



Unit dimension

Sub-plate type body



O'Ring size at port P, A, B & T :
9.25 i.d. x 1.78 c.s.d.

Tightening torque
7 Nm.

Polyhydron Pvt. Ltd.
78-80, Machhe Industrial Estate,
Machhe, Belgaum - 590 014. INDIA.

Phone : +91-(0)831-2411001
Fax : +91-(0)831-2411002
E-mail : polyhydron@vsnl.com
Website : www.polyhydron.com



**LEVER OPERATED
DIRECTIONAL CONTROL VALVE
DL06 (CETOP 03)**

ENGINEERING

3

Ref. No. P09497

Ordering code

4 DL 06 S G S A — 01

3 Service port
4 Service port

Directional valve
Lever operated

Size

Sub-plate S

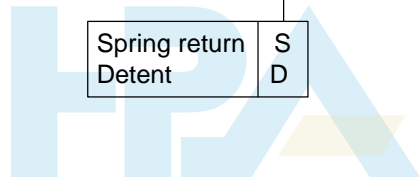
Spool type
refer chart

Spring return
Detent S
D

Design code
subject to change.
Installation dimensions
remain same for design code
01 thru 09.

Option for converting
3 position valve to 2 position

A	Control position 'a' & 'o' only
B	Control position 'b' & 'o' only
Omit for standard valve	



HYDRO PNEUMATIC ACCESSORIES
W: <http://hpa.net.in> E: inq@hpa.net.in

Spool chart

Type	Symbol	Crossover	Type	Symbol	Crossover
	a 0 b A B			a 0 b A B	
A			J		
B			L		
C			M		
D			P		
E			Q		
F			U		
G			V		
H					

Note : Subplate to be ordered separately.

All rights reserved.
Subject to revision.