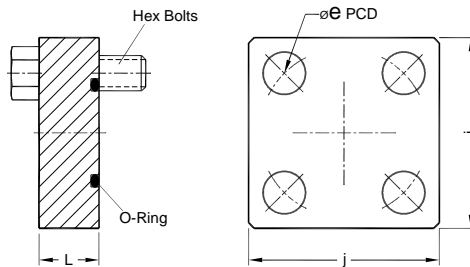


# Blind Flanges

# SSB/SHB

Dimensions in mm

Mounting Interface conforms to ISO 6164



Part No. Flange	Nom Flange Size	DN Size	$\varnothing e$	j	L	O - Ring ID x CSD (Viton) 90 ± 5 Shore	Hex. bolts (10.9)
<b>PN 250 bar</b>							
<b>SSB - 04</b>	<b>1/2"</b>	13	42	45	23	19.0 x 3.55	M8x35
<b>SSB - 06</b>	<b>3/4"</b>	19	50	50	23	25.0 x 3.55	M8x35
<b>SSB - 08</b>	<b>1"</b>	25	62	65	25	32.5 x 3.55	M10x40
<b>SSB - 10</b>	<b>1.1/4"</b>	32	73	75	32	37.5 x 3.55	M12x50
<b>SSB - 12</b>	<b>1.1/2"</b>	38	85	90	36	47.5 x 3.55	M16x60
<b>SSB - 16</b>	<b>2"</b>	51	98	100	41	56.0 x 3.55	M16x65
<b>SSB - 20</b>	<b>2 1/2"</b>	56	118	120	50	69.0 x 3.55	M20x80
<b>SSB - 24</b>	<b>3"</b>	63	145	140	60	85.0 x 3.55	M20x90
<b>PN 400 bar</b>							
<b>SHB - 04</b>	<b>1/2"</b>	13	42	45	23	19.0 x 3.55	M8x35
<b>SHB - 06</b>	<b>3/4"</b>	19	50	50	23	25.0 x 3.55	M8x35
<b>SHB - 08</b>	<b>1"</b>	25	62	65	25	32.5 x 3.55	M10x40
<b>SHB - 10</b>	<b>1.1/4"</b>	32	73	75	32	37.5 x 3.55	M12x50
<b>SHB - 12</b>	<b>1.1/2"</b>	38	85	90	36	47.5 x 3.55	M16x60
<b>SHB - 16</b>	<b>2"</b>	51	98	100	41	56.0 x 5.30	M16x65
<b>SHB - 20</b>	<b>2 1/2"</b>	56	118	120	50	69.0 x 5.30	M20x80
<b>SHB - 24</b>	<b>3"</b>	63	145	150	54	75.0 x 5.30	M24x90
<b>SHB - 28</b>	<b>3 1/2"</b>	70	160	160	64	85.0 x 5.30	M24x100
<b>SHB - 32</b>	<b>4"</b>	80	175	180	75	87.5 x 5.30	M30x120