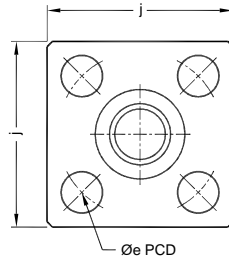
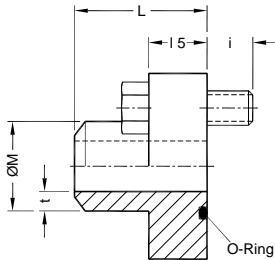


Buttweld Solid Flanges

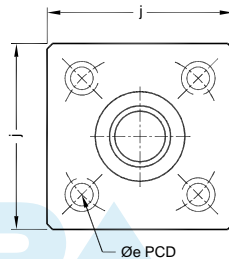
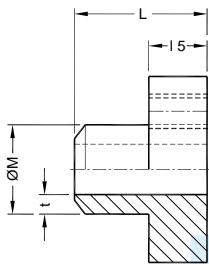
SBI / SBIC

Dimensions in mm

Mounting Interface conforms to ISO 6164



Flanges
Model : **SBI / HBI**



Counter Flanges
Model : **SBIC / HBIC**

* Not included in ISO 6164 std

Part No. Flange	Part No. Counter Flange	Nom Flange Size	DN Size	ØM	Pipe Sch	t	Ø e	15	j	i	L	O - Ring ID x CSD (Viton) 90 ± 5 Shore	Hex. bolts (10.9)
PN 250 bar													
SBI-21.3-80	SBIC-21.3-80	1/2"	13	21.3	80	3.70	42	23	45	12	30	19.0 x 3.55	M8x35
SBI-26.6-80	SBIC-26.6-80	3/4"	19	26.6	80	3.92	50	23	50	12	35	25.0 x 3.55	M8x35
SBI-33.4-80	SBIC-33.4-80	1"	25	33.4	80	4.54	62	25	65	15	40	32.5 x 3.55	M10x40
SBI-42.2-160	SBIC-42.2-160	1.1/4"	32	42.2	160	6.35	73	32	75	18	45	37.5 x 3.55	M12x50
SBI-48.3-160	SBIC-48.3-160	1.1/2"	38	48.3	160	7.13	85	36	90	24	50	47.5 x 3.55	M16x60
SBI-60.3-160	SBIC-60.3-160	2"	51	60.3	160	8.71	98	41	100	24	60	56.0 x 3.55	M16x65
SBI-73.0-160	SBIC-73.0-160	2 1/2"	56	73.0	160	9.52	118	50	120	30	70	69.0 x 3.55	M20x80
SBI-88.9-160	SBIC-88.9-160	3"	63	88.9	160	11.00	145	60	140	30	80	85.0 x 3.55	M20x90
*SBI-114.3-160	SBIC-114.3-160	4"	80	114.3	160	13.50	175	75	180	45	135	112 x 3.55	M30x120
PN 400 bar													
HBI-21.3-160	HBIC-21.3-160	1/2"	13	21.3	160	4.75	42	23	45	12	40	19.0 x 3.55	M8x35
HBI-26.6-160	HBIC-26.6-160	3/4"	19	26.6	160	5.56	50	23	50	12	45	25.0 x 3.55	M8x35
HBI-33.4-160	HBIC-33.4-160	1"	25	33.4	160	6.35	62	25	65	15	50	32.5 x 3.55	M10x40
HBI-42.2-XXS	HBIC-42.2-XXS	1.1/4"	32	42.2	XXS	9.70	73	32	75	18	55	37.5 x 3.55	M12x50
HBI-48.3-XXS	HBIC-48.3-XXS	1.1/2"	38	48.3	XXS	10.16	85	36	90	24	60	47.5 x 3.55	M16x60
HBI-60.3-XXS	HBIC-60.3-XXS	2"	51	60.3	XXS	11.07	98	41	100	24	70	56.0 x 5.30	M16x65
HBI-73.0-XXS	HBIC-73.0-XXS	2 1/2"	56	73.0	XXS	14.02	118	50	120	30	80	69.0 x 5.30	M20x80
HBI-88.9-XXS	HBIC-88.9-XXS	3"	63	88.9	XXS	15.24	145	54	150	36	105	75.0 x 5.30	M24x90
HBI-101.6-XXS	HBIC-101.6-XXS	3 1/2"	70	101.6	XXS	16.15	160	64	160	36	105	85.0 x 5.30	M24x100
HBI-114.3-XXS	HBIC-114.3-XXS	4"	80	114.3	XXS	17.12	175	75	180	45	135	87.5 x 5.30	M30x120