



# FEED AND POWER HAND PUMP HP 5012 / HP 5016

ENGINEERING

1

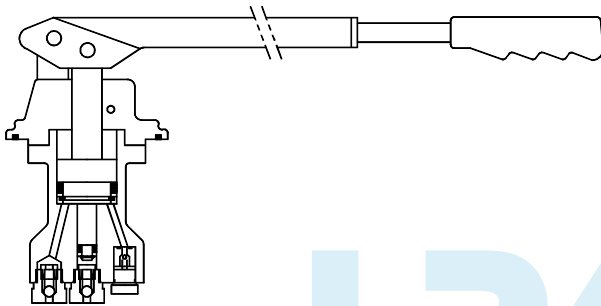
Ref. No. P04911  
Release 07/2003

## Description

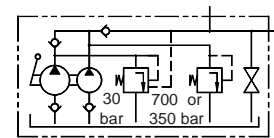
Automatic change-over from high discharge at low pressure to low discharge at high pressure. Heavyduty construction with hardened and ground piston. Renewable Suction, Delivery, Relief, and Release valve parts. Integral Relief and Release valves. Collapsible hand lever for compact size and short hand movement at low pressure.



## Section

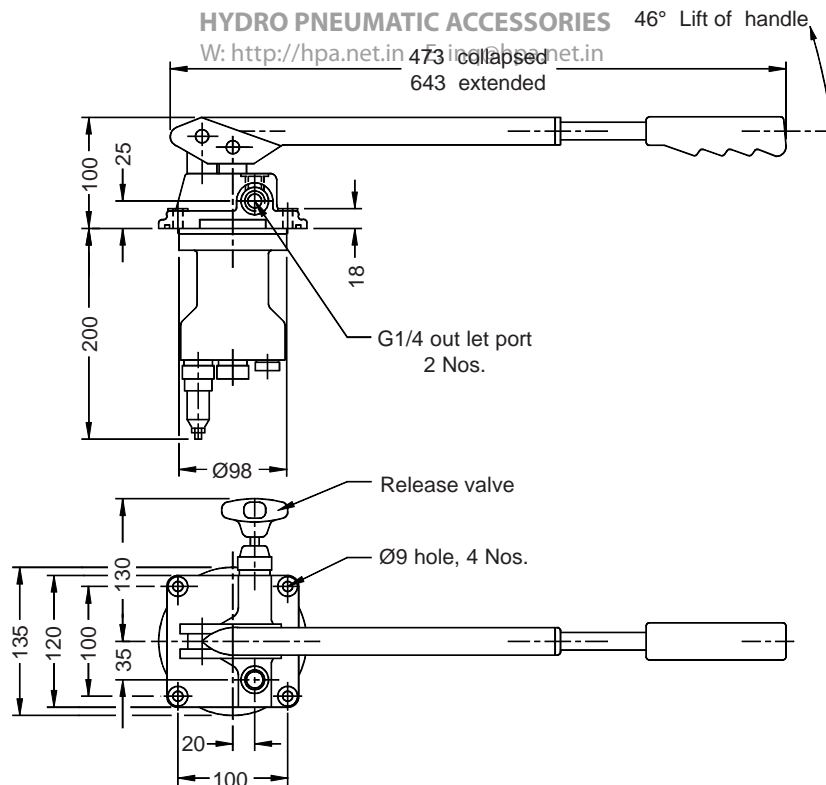


## Hydraulic Symbol



## Unit dimension

### Pump cartridge



**Polyhydron Pvt. Ltd.**  
78-80, Machhe Industrial Estate,  
Machhe, Belgaum - 590 014. INDIA.

**Phone** : +91-(0)831-411001  
**Fax** : +91-(0)831-411002  
**E-mail** : polyhydron@vsnl.com  
**Website** : www.polyhydron.com



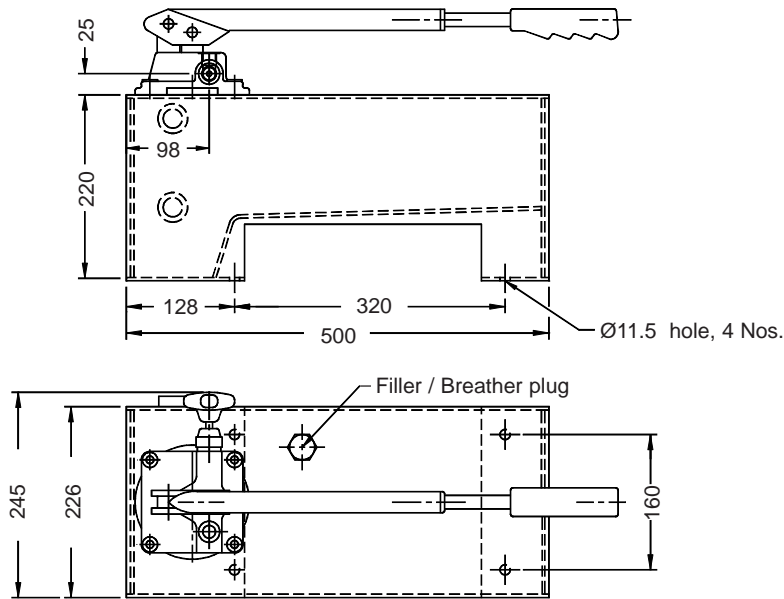
FEED AND POWER  
HAND PUMP  
HP 5012 / HP 5016

ENGINEERING

2

Ref. No. P04911

Pump with oil tank



Technical specification

Construction ..... Differential piston with single hand lever  
Hydraulic medium ..... Mineral oil, (ISO VG 68 Grade recommended).  
Max. working pressure ..... HP 5012 .... 700 bar  
..... HP 5016 .... 350 bar

Flow capacity ..... Mode - Flow per stroke cm<sup>3</sup>

	Upto 30 bar		Above 30 bar
HP 5012	49	2.8	
HP 5016	49	5	

Oil tank capacity ..... 13 l  
Oil tank displacement ..... 10 l  
Force required at the end of the ..... 400 N. APPROX  
hand lever at max. pressure  
Mass ..... Pump cartridge only ..... 9.86 kg.  
..... Pump with oil tank (Without oil) ..... 21.6 kg

Ordering code

HP	5012	K	S	02
----	------	---	---	----

Hand pump

Feed and power Hand pump  
As specified in technical data above  
5012  
5016

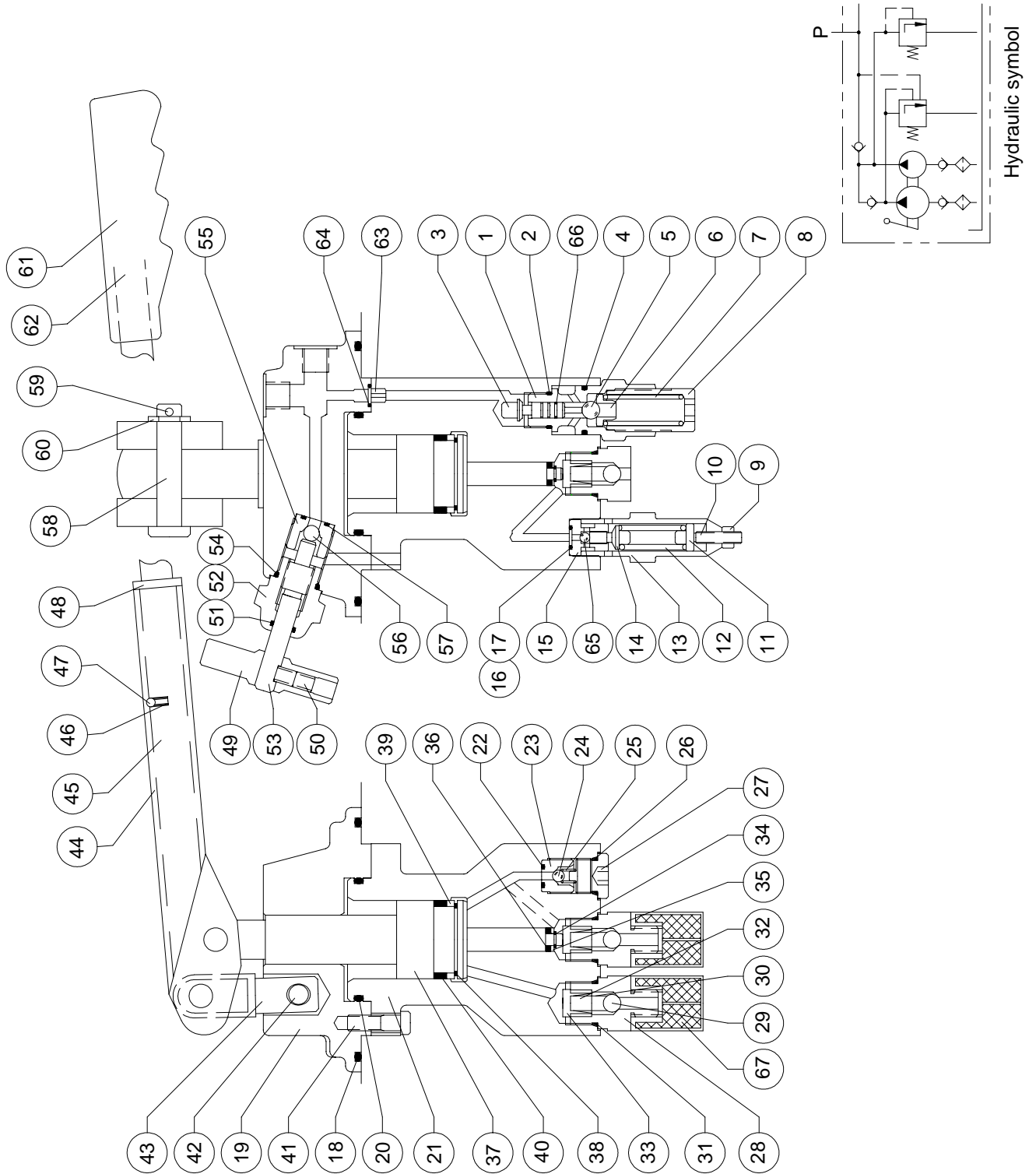
For pump cartridge only (without tank)  
Omit for pump with tank  
K

Design code subject to change installation dimensions remain same for design code 01 thru 09.

S Oil level above the mounting holes  
Omit for standard model

All rights reserved.  
Subject to revision.

Sectional View and Part List





**FEED AND POWER  
HAND PUMP  
HP 5012 / HP 5016**

**SERVICE**

**4**

**Ref. No. P04911**

Part no.	Description	Qty.	Part no.	Description	Qty.
1	Unloading valve housing	1	□ 34	Circlip external (Ø5) HP12	1
* 2	O' Ring (15 i.d.x Ø2.5)	1	35	Spacer (Ø6) HP16	1
3	Pusher pin	1	* 36	Seal fabric (12 o.d x 6 i.d x 7 th) HP12	1
* 4	O' Ring (20 i.d.x Ø2.65)	1	37	Seal fabric (16 o.d x 8 i.d x 8 th) HP16	1
5	Ball	1	38	Piston	1
6	Spring pad	1	39	Circlip external	1
□ 7	Spring unloader	1	* 40	Spacer	1
8	Spring holder	1	41	Seal fabric (50 o.d x 40 i.d x 9 th)	1
9	Nut	1	42	Cap screw with Spring washer	3
10	Socket head cap screw	1	43	Pin	1
11	Spring pad	1	44	Link	1
□ 12	Spring Relief	1	45	Yoke	1
13	Spring casing	1	46	Handle rod	1
14	Poppet	1	47	Spring detension	1
15	Relief valve seat	1	48	Ball	1
* 16	Backup ring (12 x 8 x 1.5 th)	1	49	Guide screw	1
* 17	O' Ring (4.5 i.d.x 1.8 c.s.d.)	1	50	Lever	1
* 18	O' Ring (117 i .d.x 3.55 c.s.d.)	1	51	Grub screw	2
19	Front cover	1	* 52	O' Ring (10 i.d x 1.8 c.s.d)	1
* 20	O' Ring (58 i.d.x 3.55 c.s.d.)	1	53	Guide	1
21	Housing	1	54	Spindle	1
* 22	O' Ring (7.1 i.d.x1.8c.s.d.)	2	* 55	O' Ring (19 i.d x 2.5 c.s.d)	1
23	Delivery valve seat	2	56	Release valve seat	1
24	Ball	2	57	Ball	1
□ 25	Spring delivery	2	* 58	O' Ring (10 i.d x 1.8 c.s.d)	1
* 26	O' Ring (15 i.d.x 2.5 c.s.d.)	2	59	Pin	2
27	Spring guide	2	60	Split cotter pin	2
28	Suction valve housing	2	61	Spacer	2
29	Ball	2	62	Grip	1
□ 30	Spring suction	2	63	Grip holder	1
* 31	O' Ring (19 i.d.x 2.5 c.s.d.)	2	64	Spring dowel	1
32	Spring guide	2	* 65	O' Ring (7.1 i.d x 1.8 c.s.d)	1
33	Screw	2	66	Steel ball	1
			* 67	O' Ring (4.5 i.d x 1.8 c.s.d)	1
				Suction strainer	2

Note : \* Recommended seal kit.      \*, □ Recommended spare kit.

While ordering the individual spares/seal kit/spare kit give part.no.  
and complete details of model code as punched on the pump body.