



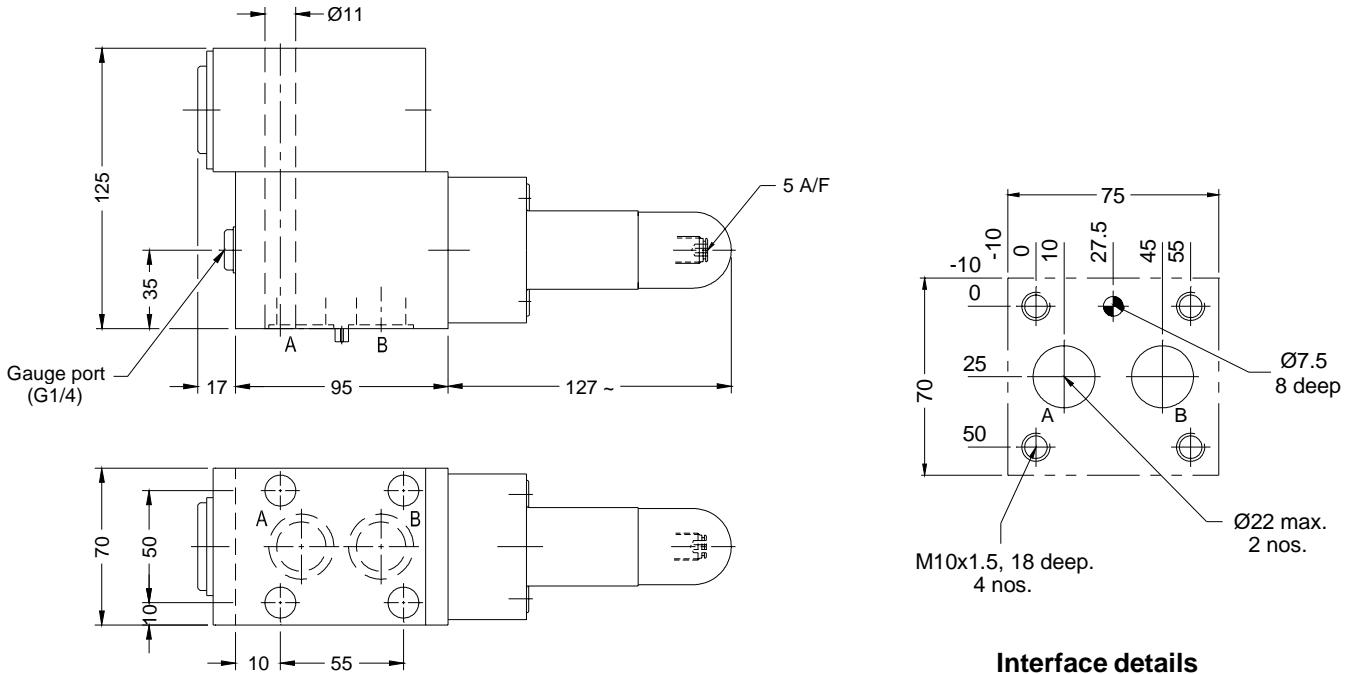
COUNTER BALANCE VALVE CB (Design Series 30)

ENGINEERING

2

Ref. No. P03449

Valve : Subplate body



Interface details



Technical Specifications

Construction	Direct acting, seat type.
Mounting type	Threaded port body and Subplate body
Mounting position	Optional
Direction of flow	Free flow port B to A. Counter balance A to B.
Operating pressure	315 bar.
Cracking pressure	Refer ordering code.
Hydraulic medium	Mineral oil.
Viscosity range	10 cSt to 380 cSt.
Fluid temperature range	-20 °C to +70 °C
Fluid cleanliness requirement	As per ISO 16/13 or better.
Flow handling capacity	200 lpm max.
Mass	Threaded body ---- 12 kg. APPROX Subplate body ---- 12 kg. APPROX



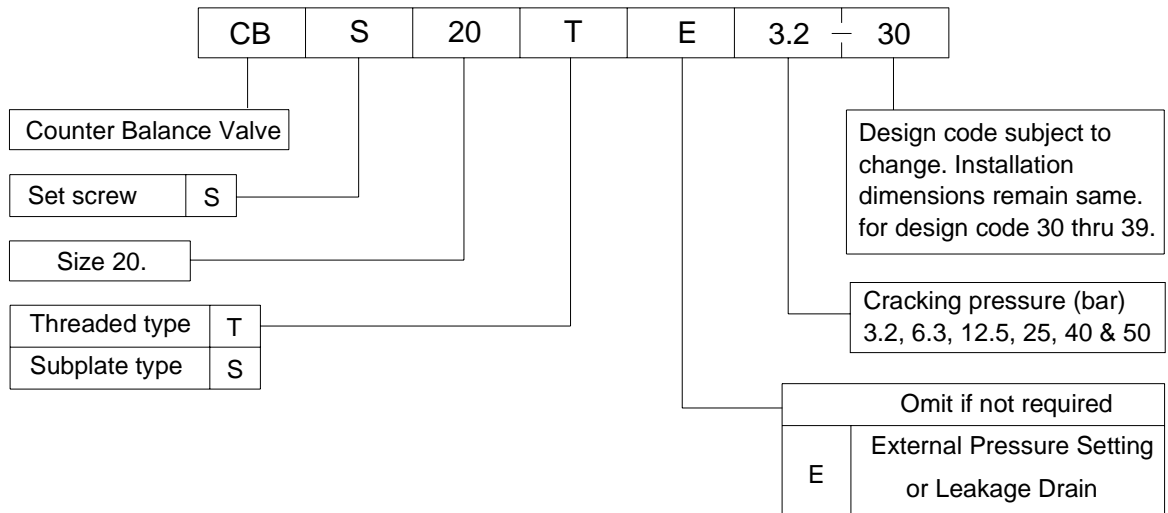
COUNTER BALANCE VALVE
CB (Design Series 30)

ENGINEERING

3

Ref. No. P03449

Ordering Code





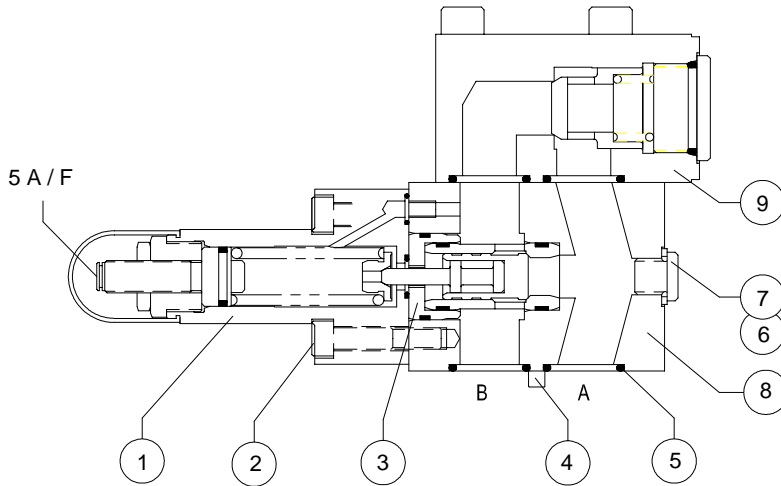
COUNTER BALANCE VALVE
CB (Design Series 30)

SERVICE

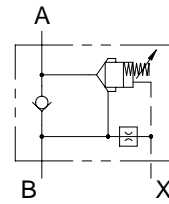
4

Ref. No. P03449

Sectional View and Spare parts detail



Hydraulic Symbol



Sl.no.	Description	Qty.
1	High cracking cover	1
2	S.H.C.Screw	1
3	Cartridge valve	1
4	Spring dowel	1
* 5	O'ring (24 id x 3 csd)	2
6	Plug	1
7	Bonded seal	1
8	Body	1
9	Check valve	1

Note : * Recommended seal kit. * & □ Recommended spare kit.
While ordering the individual spares / seal kit / spare kit give part.no.
and complete details of model code as punched on the pump body.